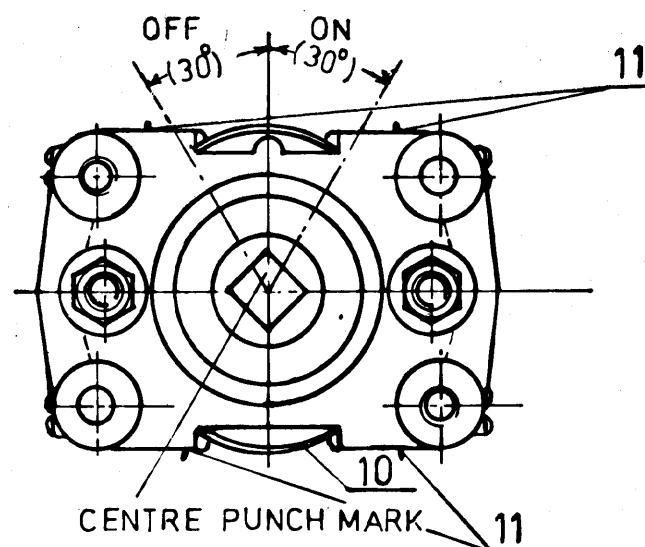
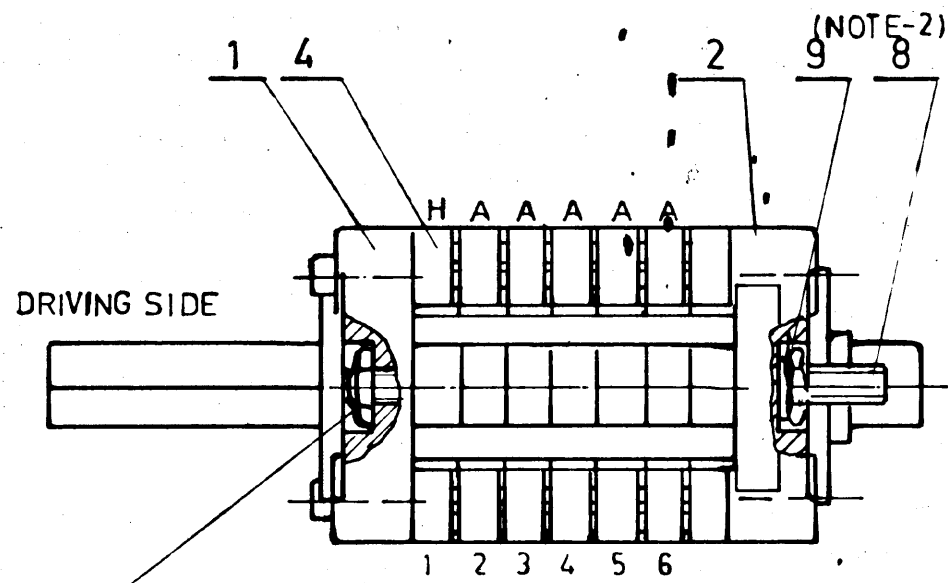


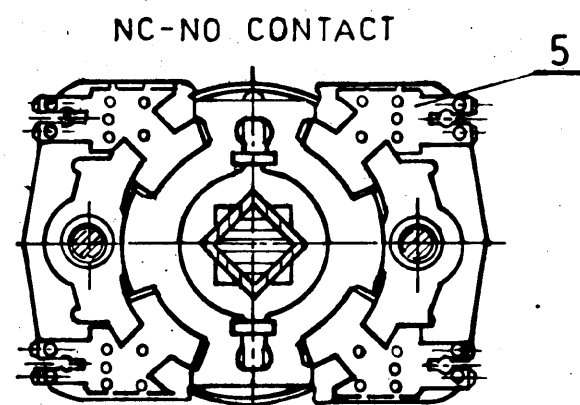
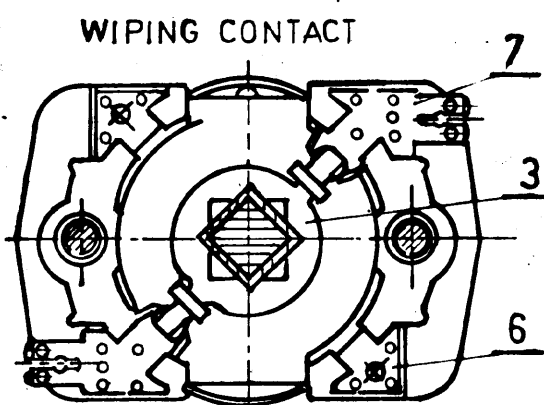
DRG NO. 25188006 231



(NOTE-2)  
NUT TO BE LOCKED BY UP-SETTING/RIVETTING  
THE MATERIAL OF ITEM 8.

	OFF	ON
A	( $\approx 73^\circ$ ) $17\frac{1}{2}^\circ$	$17\frac{1}{2}^\circ$ ( $\approx 73^\circ$ )
H	$20\frac{1}{2}^\circ$	$20\frac{1}{2}^\circ$

— CONTACT CLOSED  
— CONTACT OPENED



ITEM NO.	DESCRIPTION	DRAWING NO.	MATL. CODE	UNIT WT.
04 11	STICKERS WITH NOS	—		
02 10	HARD PLASTIC FOIL	SG 90087 003		
04 09	HEX. HDNUT	21262032-114		
02 08	STUD	SG 90014 005		
02 07	CONTACT PIECE	3 5188001 434		
02 06	SUPPORT SPACER	4 5188006 241		
20 05	CONTACT PIECE	3 5188006 240		
07 04	CONTACT HOLDER	3 5188006 239		
06 03	CONTACT PIECE	4 5188006 237		
01 02	END THRUST PIECE	4 5188006 233A		
01 01	HOLDER	3 5188006 243A		

NOTES

- RATING OF AUXILIARY SWITCH 220V DC, BREAKING CAPACITY 2A DC, MAKING CAPACITY 10A DC. ALL ROUTINE & TYPE TESTS ARE AS PER IS-6875 MECHANICAL ENDURANCE TEST 5000 OPERATIONS (MIN). ELECTRICAL ENDURANCE TEST 1000 OPERATIONS (MIN) AT 2A DC. WITH TIME CONSTANT OF 20 MILLISECONDS (MIN).
- LOCKED WITH LOCTITE OR THREAD LOCK AFTER TIGHTENING WITH 3 Nm TORQUE.
- ENSURE TIGHTNESS OF STACK ASSEMBLY SUCH THAT TERMINALS ARE NOT LOOSE AND MOVING CONTACTS ENGAGES PROPERLY WITH CORRESPONDING FIXED CONTACTS IN BOTH DIRECTIONS, AND TURNING MOVEMENT SHALL BE SMOOTH.

TOLERANCES TO  
HY.0230261

VAR. NO.	REMARKS	DATE	DESCRIPTION	DRAWING NO.	MATL. CODE	UNIT WT.
01						

ADDITIONAL INFORMATION		TYPE OF PRODUCT SF6 3AS/AT	
STATUS OF DRAWING		OR	
DISTRIBUTION OF PRINTS		NAME OF CUSTOMER/PROJECT	
INVENTOR: 1281 SIGN AND DATE: 31/01/2017 REF. DRG. NO.: 331016000217		BHARAT HEAVY ELECTRICALS LTD. HYDERABAD	
REV. 01	DATE 20-1-89	APPROVED: T.R. RAO	DATE 30-10-88
NOTES ADDED:		SCALE: NTS	WEIGHT (KG):
		TITLE: AUXILIARY SWITCH ASSY	DRAWING NO.: 25188006 231