

DIMN.TOL :- AS PER CORP. STD. AA0230208 COARSE GRADE UNLESS OTHERWISE STATWD.

**H.V. DIODE STACK SPECIFICATION:-**

1. If = CONTINUOUS FORWARD CURRENT AT 100°C IN OIL : 1.4 Amp
2. IFRM = PEAK REPETITIVE FORWARD CURRENT AT 100°C (AT 50Hz ) : 5 Amps
3. IFSM = SURGE NON REPETITIVE FORWARD CURRENT AT 25°C : 50 Amps ( FOR A PERIOD OF t=10msec.)
4. STORAGE TEMPERATURE : -40°C TO 125°C
5. MAXIMUM OPERATING FREQUENCY : 5 KHz
6. APPLICATION : HVR TRANSFORMER. NOTE:- DIODE STACK SHOULD BE COMPATIBLE WITH SILICONE & MINIRAL OIL
7. DIODE TYPE : AVALANCHE GLASS PASSIVATED, HERMETICALLY SEALED PACKAGE

**TYPICAL DIODE CHARACTERISTICS :-**

VRRM [REPETITIVE PEAK REVERSE VOLTAGE]:- 800V; VBR [AVALANCHE BREAK DOWN VOLTAGE]:- 900-1600V  
 VF [CONT. FORWARD VOLTAGE DROP]:- 1.25V(MAX) AT 2.5AMP.AT AMBIENT; IR [REVERSE LEAKAGE CURRENT]:- 80 micro-Amp AT 100°C. AT VRRM MAX.  
 OR EQUIVALENT TO MEET DIODE STACK SPECIFICATIONS.

**TESTS :-**

- A) ROUTINE TEST:-
- 1) INSULATION RESISTANCE TEST IN FORWARD BIAS & REVERSE BIAS CONDITION WITH 500 VDC MEGGER.
  - 2) POLARITY TEST WITH 500 VDC MEGGER.
  - 3) LOAD TEST AT 1.4 Amp. DC FOR 30MINUTES AT 100° C
  - 4) HIGH VOLTAGE TEST:- APPLY 160 KV AC AT 100 Hz FOR 1 MINUTE BETWEEN TERM. NO. 1 & 2.
  - 5) DIMENSIONAL CHECK
- B) TYPE TEST:- (TO BE CONDUCTED ON 01 SAMPLE PER LOT.)
- 1) SAMPLE SHOULD BE STORED AT 125°C FOR 168 Hrs. AND AT THE END ALL ROUTINE TESTS SHOULD BE REPEATED. REJECTION SHOULD BE NIL.
  - 2) SAMPLE SHOULD BE IMMERSED IN OIL AT 100°C AND 1.2 TIMES RATED CURRENT SHOULD BE PASSED FOR 168Hrs. ALL ROUTINE TESTS SHOULD BE REPEATED & REJECTION SHOULD BE NIL.

**INFORMATION REQUIRED WITH OFFER IN SEXTUPLET:-**

- (i) TECHNICAL LEAFLETS CONTAINING CHARACTERISTICS & NO. OF DIODES.
- (ii) DIMENSIONAL DRAWINGS.

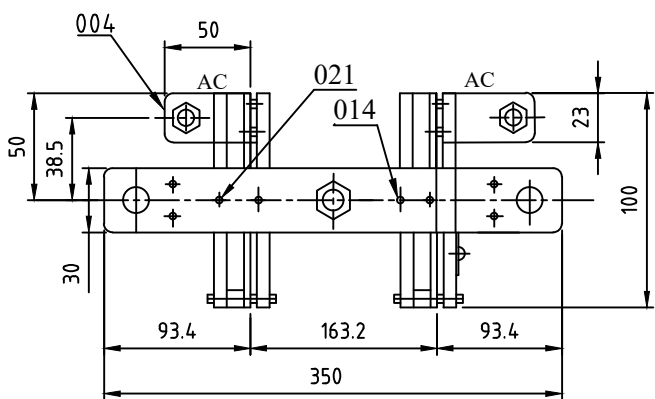
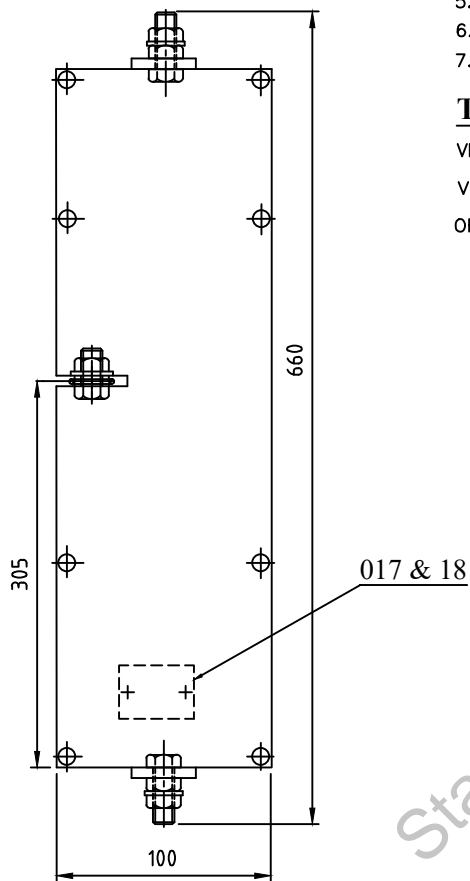
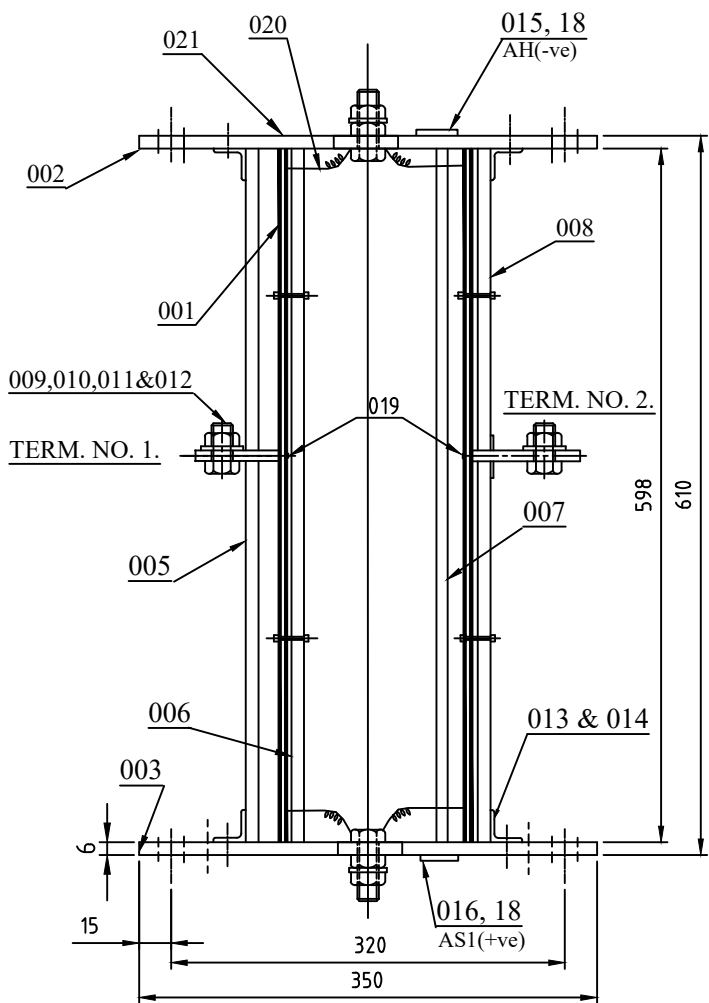
**INFORMATION REQUIRED WITH CONSIGNMENT:-**

- (i) TEST CERTIFICATE : 6 COPIES.
- (ii) CHARACTERISTICS TO PROVE AVALANCHE TYPE DIODES.

**NOTE (FOR INTERNAL USE):-**

1. ALL ITEMS NO. 001 TO 021 ARE PROCURED FROM DIODE STACK MANUFACTURER.
2. THE DIODE STACK ARE SUITABLE FOR CURRENT UPTO 1400 m Amp.

STYLE NO.  
ST 627647      SIGN. -- SD --  
DATE:- 02.09.06



QTY	REMARKS	ITEM NO.	DESCRIPTION
004	BRASS	021	CH. HD. SCREW M4 X 10 Lg
004		020	1.5 mm. Sq. TEFLON WIRE WITH LUGS.
004	BRASS	019	CH.HD.SCREW M3x10 L
006	MS	018	SELF TAPPING SCREW NO. 4x6.5 L
001	AL	017	SR. NO. PLATE
001	AL	016	LABEL As1 [+Ve]
001	AL	015	LABEL AH [-Ve]
024	MS	014	SCREW CH. HD. M4X10 Lg.
008	MS	013	ANGLE
008	BRASS (ET)	012	NUT HEX. HD. (FOR M8)
004	SP. ST	011	WASHER SPG. (FOR M8)
012	BRASS (ET)	010	PLAIN WASHER (FOR M8)
004	BRASS (ET)	009	SCREW HEX. HD. M8X25 Lg.
001	SMC	008	R.H.SIDE SUPPORT 100X598X6T.
001	SMC	007	R.H.SIDE SUPPORT 100X598X6T.
001	SMC	006	L.H.SIDE SUPPORT 100X598X6T.
001	SMC	005	L.H.SIDE SUPPORT 100X598X6T.
002	CU (ET).	004	BUS BAR CU. 8TKX50X23Lg.
001	CU (ET).	003	BUS BAR CU. 6TKX30X350Lg.
001	CU (ET).	002	BUS BAR CU. 6TKX30X350Lg.
002		001	RECTIFICR PCB (WITH DIODES)

ADDITIONAL INFORMATION		TYPE OF PRODUCT OR NAME OF CUSTOMER/PROJECT		H.V.R. TRANSFORMER FOR ESP	
STATUS OF DRAWING		DISTRIBUTION OF PRINTS		TRE-1, TRP-1, BAY8-2	
DEPT TRE CODE 406		GRADE OF UN. TOL. DIM. PART		SCALE NTS	
REV 01 02.09.06 CHECKED		REV 02 13.03.08 CHECKED		REV 03 16.07.20 CHECKED	
DRAWING REVISED TO UPLD IN EDMS.		NOTE NO. 2 ADDED.		ST 627647 ADDED.	
SHEET NO. 01		NO. OF SHEETS 01		REV. 03	

REV	DATE	ALTERED CHECKED	REV	DATE	ALTERED CHECKED	REV	DATE	ALTERED CHECKED
03	16.07.20	CHECKED	02	13.03.08	CHECKED	01	02.09.06	CHECKED

THE INFORMATION ON THIS DOCUMENT IS THE PROPERTY OF BHARAT HEAVY ELECTRICALS LIMITED. IT MUST NOT BE USED DIRECTLY OR INDIRECTLY IN ANY WAY DETRIMENTAL TO THE INTEREST OF THE COMPANY.

INVENTORY NO. 146701050003  
SIGN. & DATE REF. DRG. NO. 146701050003