



BHARAT HEAVY ELECTRICALS LIMITED
INDUSTRIAL VALVES PLANT
433, INDUSTRIAL COMPLEX
GOINDWAL SAHIB
DISTT. TARN TARAN- PUNJAB – 143422

No.BHEL:IVP:
SC:Isolating
Valve:AD
2021-22/01
Dated
25.05.2021

NOTICE INVITING APPLICATIONS FOR REGISTRATION OF SUB CONTRACTORS

BHARAT HEAVY ELECTRICALS LIMITED [BHEL] is manufacturing Industrial Valves and other Boiler accessories at its Industrial Valves Plant, Goindwal Sahib unit. Machining Vendors are required for machining of various castings & components. Annual procurement value for the FY 2021-22 – Rs 3 lakhs.

Expression of interest and applications for registration are invited from sub-contractors (BHEL encourages procurement from Micro and Small Enterprises (MSEs), MSEs are requested to apply for registration) for doing the machining job of various components of Isolating Valves. Various work centers involved in the machining job work shall be VTL, Horizontal boring machine, Drill machine, etc. Chrome plating may also be required on certain components post machining.

Isolating Valves

Casting machining of body and other machining components. List of components, where machining vendors are required, is attached herewith as Annexure-I. Sample drawings of some components are also attached. (S.no of list – 4 and 26)

BHEL is looking for prospective Sub Contractors for above detailed job work for BHEL.

BHEL shall evaluate the vendors as per its established vendor selection, evaluation and registration procedure. Supplier registration can be done online : <https://supplier.bhel.in/>

BHEL invites such vendors to visit its above located plant on any working day from Monday to Saturday between 0900 Hrs to 1730 Hrs and contact undersigned for any clarification regarding:

Items details and requirement		Vendor registration form/procedure
Vineet Kumar Manager (Sub Contracting)	Mukesh Kumar Dy.Manager (Sub Contracting)	Sahil Malhotra Dy.Manager (Sub-Contracting)
Phone: 01859-224625	01859-224644	01859-224669
Mobile: 99150 47504	81465 52387	98142 09180
E-mail: vineet.k@bhel.in	kumarmukesh@bhel.in	sahil@bhel.in

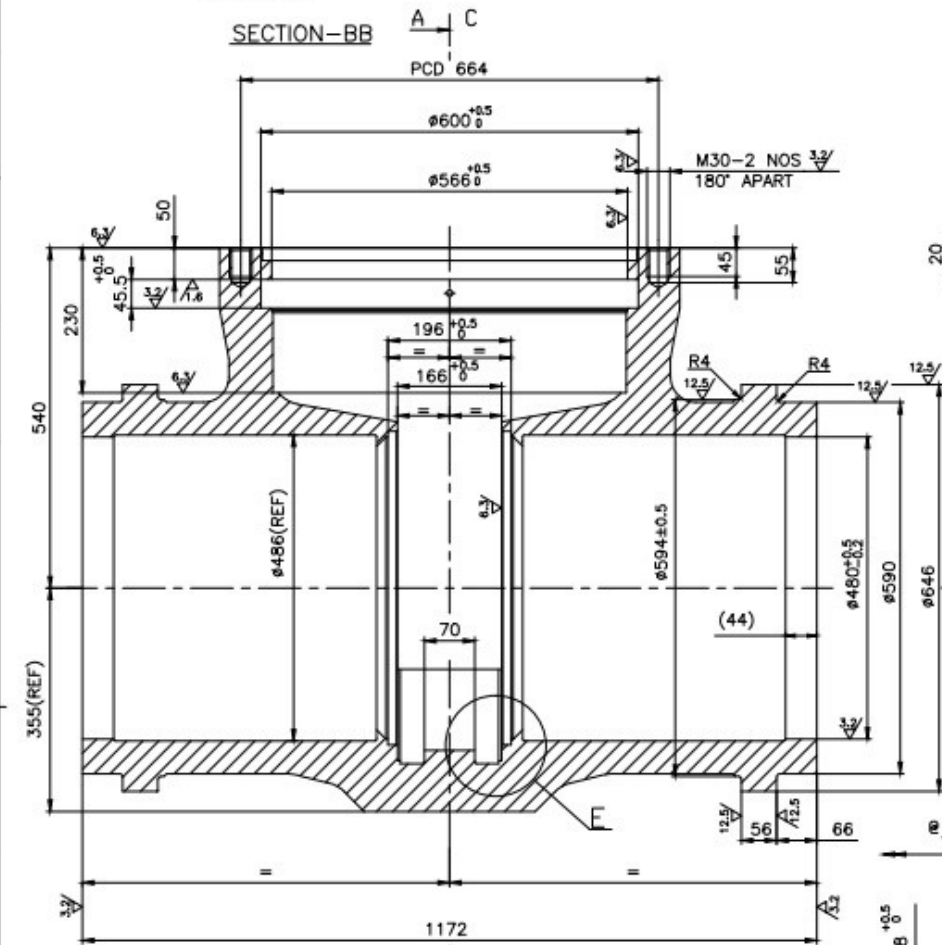
BHARAT HEAVY ELECTRICALS LIMITED INDUSTRIAL VALVES
PLANT, 433, INDUSTRIAL COMPLEX, GOINDWAL SAHIB,
DISTT. TARN TARAN, PUNJAB – 143 422

**Isolating Valve
List of Components**

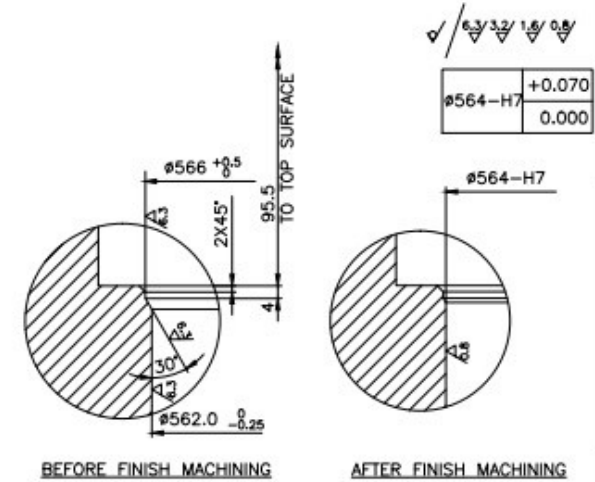
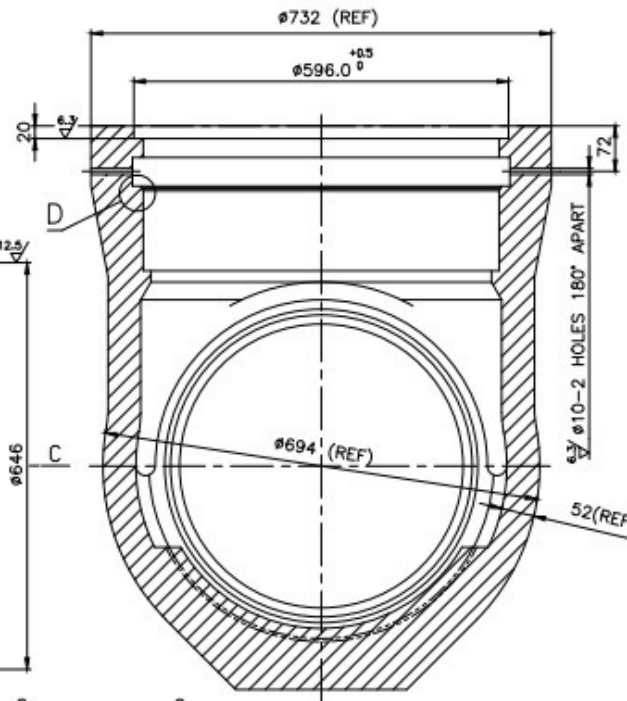
Annexure I

S.No	Gr. No	Job/Component Description	Description of Valve/ Product(Used in)
1	G2410	Body Machining	450-C500-CRHIV-BW-WCB/WCC
2	G2410b	Body Machining	450-C900SPL-HRHIV-BW-WC9
3	G2574	Body Machining	500-C500-CRHIV-BW-WCC/WC9
4	G2578	Body Machining	550-C900-HRHIV-BW-WC9
5	G2578a	Body Machining	550-C900-HRHIV-BW-C12A
6	G2408a	Body Machining	700-C600-CRHIV-BW-WCC
7	G2408c	Body Machining	700-C900-HRHIV-BW-C12A
8	G2408	Body Machining	750-C600/900-HRHIV-BW-WCC
9	G2408b	Body Machining	750-C600/900-HRHIV-BW-C12A
10	G2432	COVER SHEET	750-C600-CRHIV-BW-WCC
11	G2429	SEAT RING ROUGH	450-C500-CRHIV-BW-WCB
12	G2576	Seat Ring Rough	500-C500-CRHIV-BW-WCC
13	G2485	Seat Ring Rough	550-C900-HRHIV-BW-WC9/C12A
14	G2573	SEAT RING Final	450-C500-CRHIV-BW-WCB/WC9
15	G2575	Seat Ring Final	500-C500-CRHIV-BW-WCC
16	G2520	Seat Ring final	550-C900-HRHIV-BW-WC9/C12A
17	G2517	Locking Plate-3200	450-C500-CRHIV-BW-WCB
18	G2518	Locking Plate-3208/3390	550-C900-HRHIV-BW-WC9/C12A
19	G2415a	LOCKING PLATE-3204	700-C600-CRHIV-BW-WCC
20	G2415	Locking Plate-3245	750-C600-CRHIV-BW-WCC
21	G2422	SUPPORT RING-3201/3200/3396	450/500-C900-HRHIV-BW-WC9
22	G2483	Support Ring-3208/3390	550-C900-HRHIV-BW-WC9/C12A
23	G2530	Split Ring Assy-3200/3396	450/500-C500-CRHIV-BW-WCB/WCC/WC9
24	G2531	Split Ring Assy-3208/3390	550-C900-HRHIV-BW-WC9/C12A
25	G2425a	SPLIT RING ASSY	700-C600-CRHIV-BW-WCC
26	G2425	SPLIT RING ASSY-3245/3316	750-C600-CRHIV-BW-WCC
27	G2434	LOCATING SCREW-3200	450-C500-CRHIV-BW-WCB
28	G2412	Adjusting Screw	450-C500-CRHIV-BW-WCB
29	G2414a	DOMED SCREW	450-C500-CRHIV-BW-WCB
30	G2412b	Adjusting Screw	550-C900-HRHIV-BW-WC9
31	G2413	Adjusting Screw	700-C500-CRHIV-BW-WCC
32	G2412c	Adjusting Screw	750-C500-CRHIV-BW-WCC
33	G2414	Hex Domed Screw-3202	750-C600-CRHIV-BW-WCC

SECTION-BB



SECTION-AA

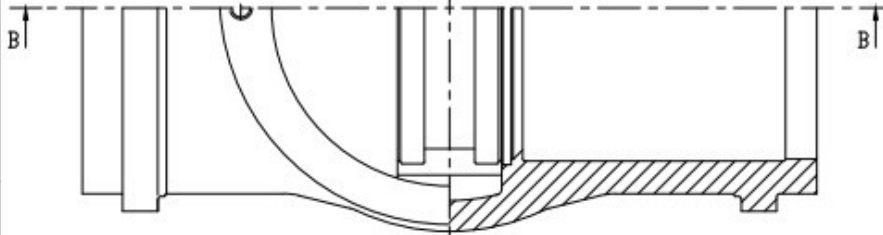


DETAIL-D

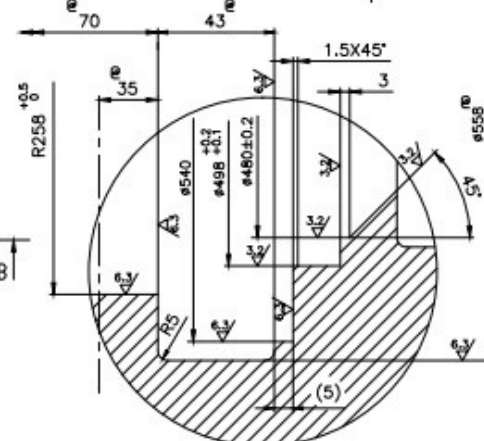
NOTE:-

- UNSPECIFIED SHARP CORNERS TO BE CHAMFERED TO 1X45°.
- ALLOWABLE DEVIATIONS FOR DIMENSION WITHOUT SPECIFIED TOLERANCE REFER: APPLICABLE QUALITY PROCEDURE.

SECTION-CC



DETAIL-E



SL NO.	DESCRIPTION	MATL CODE	MATL SPEC	HEAT TREATMENT	SCRAP SORT	NET WT (KG)	GROSS WT (KG)	DRAWING NO	ITER No
02	CASTING	92203133	SA217 C12A ATTEST	NORMALISED& TEMPERED	20	1270	1440	2-V-3390-05612 932030420000	001
01	CASTING	92033824	SA217 WC9 ATTEST	NORMALISED& TEMPERED	20	1270	1440	2-V-3208-05612/06 9316636650000	001

TYPE OF PRODUCT
OR NAME OF
CUSTOMER/PROJECT

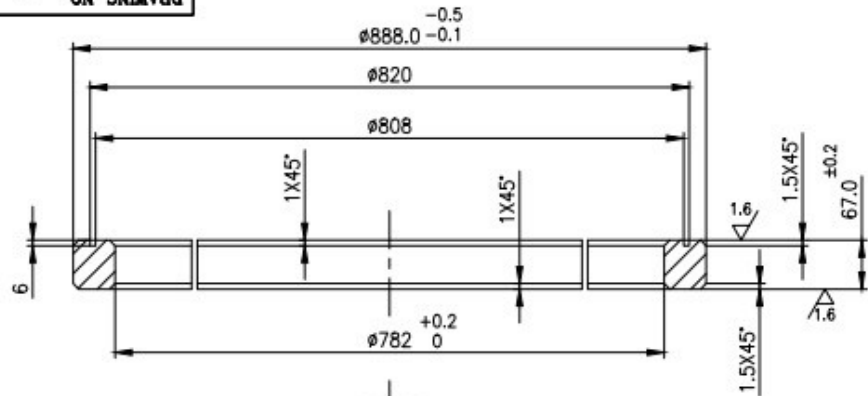
	BHARAT HEAVY ELECTRICALS LTD. UNIT: HIGH PRESSURE BOILER PLANT, THIRUCHIRAPPALLI-680014.		DRN	NAME	SRGN	DA
	CHD	M.SRINIVASAN		N.P.ESWARAN		22.05.93
	APPD	N.NAGARAJAN				22.05.93

DEPT	V.L.	SCALE	WEIGHT (KG)	REFERENCE INFORMATION
CODE	380	N.T.S	1270	COMPONENT CODE: 93 165 365 C

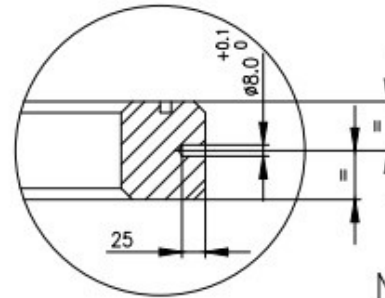
TITLE	CARD CODE	DRAWING NO.
BODY (550mm-C900)	U 01	2-V-0000-0561

REV	DATE	ALTERED	M.SRINIVASAN	REV	DATE	ALTERED	M.SRINIVASAN	REV	DATE	ALTERED	M.SRINIVASAN	REV	DATE	ALTERED	M.SRINIVASAN	REV	DATE	ALTERED	M.SRINIVASAN
05	21.12.13	CHD & APPD	SSK & KRS	07	06.06.13	CHD & APPD	SSK & KRS	06	08.07.11	CHD & APPD	M.RAJAKUMAR	05	18.06.09	CHD & APPD	M.RAJAKUMAR	04	20.03.09	CHD & APPD	P.BOONATHAN
DIMENSION 66 & 1172 WERE 64 & 1168 ±3.2 DCP : 801664				SL.No. 02 INCLUDED				DIMENSION (44) INCLUDED				DIMENSION 70, 43, 558 & (5) INCLUDED.				DIM. 558, 486, 52 WERE 544, 470 & 63 RESPLY. DIM. 540 INCLUDED. DCP:800936			
				DCP:801194				DCP:800976											

CAUTION: The information on this drawing is the property of BHARAT HEAVY ELECTRICALS LTD. and should not be used directly or indirectly in any way detrimental to the interest of the company.



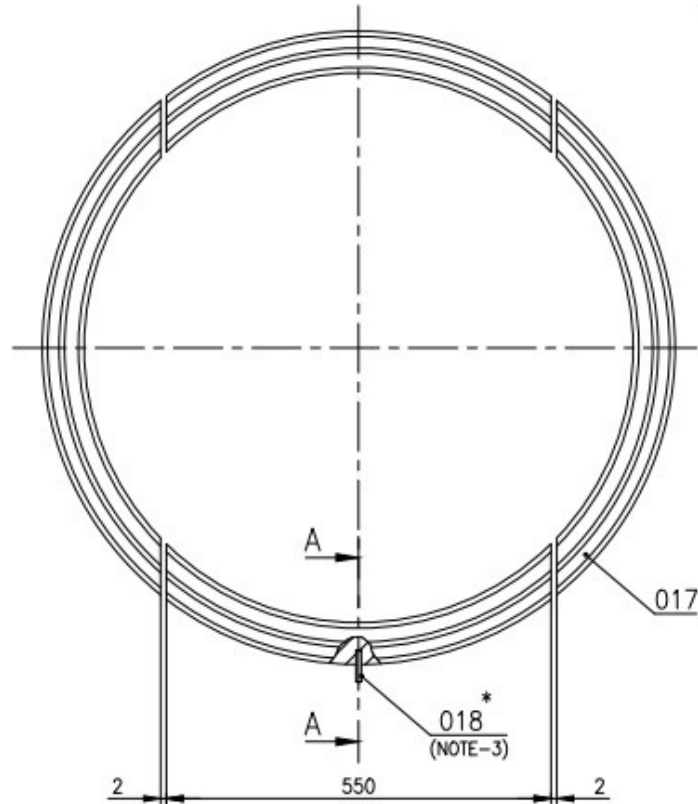
SECTION-AA



SECTION-AA

NOTES

- 01. BREAK ALL SHARP CORNERS.
- 02. HARD Cr. PLATING TO BE CARRIED OUT ON FINISHED SPLIT RINGS TO A THICKNESS OF 0.015 MM TO 0.03 MM.
- * 03. FIX ONE CYLINDRICAL PIN $\phi 8 \times 55$ FOR ASSEMBLING WITH BODY AT THE TIME OF ASSEMBLY.



SL No.	DESCRIPTION	MATL CODE	MATL SPECN	HEAT TREATMENT	SCRAP SORT	NET WT (kg)	GROSS WT (kg)	DRAWING No	ITEM No
03	CYL PIN $\phi 8 \times 55$	-	-	-	-	0.01	-	BPS 41702	018
	-	92 203 433	ASTM A182 F91 NT, CERTIFY	QT	40	72.0	-	417 02 08055 00	017
	-	-	-	-	-	-	-	3-V-3311-24536 93 203 960 0000	017
02	CYL PIN $\phi 8 \times 55$	-	-	-	-	0.01	-	BPS 41702	018
	-	92 203 249	AISI 4140 CERTIFY.	QT	40	72.0	-	417 02 08055 00	017
	-	-	-	-	-	-	-	3-V-3316-24536 93 203 357 0000	017
01	CYL PIN $\phi 8 \times 55$	-	-	-	-	0.01	-	BPS 41702	018
	SUGGESTED SIZE PL68 -892 X 892	--	SA387 GR.22 CERTIFY.	NORMALISED & TEMPERED	20	71.99	333.6	417 02 08055 00	018
	-	-	-	-	-	-	-	3-V-3245-24536/1 93 201 042 0000	017

CAUTION: The information on this document is the property of BHARAT HEAVY ELECTRICALS LTD. It must not be used directly or indirectly in any way detrimental to the interest of the company.

TYPE OF PRODUCT											
OR NAME OF											
CUSTOMER/PROJECT											
BHARAT HEAVY ELECTRICALS LTD., UNIT: HIGH PRESSURE BOILER PLANT. TIRUCHIRAPALLI-620014.							DRN	M.SRINIVASAN	SIGN	DATE	NO.OF VAR.
							CHD	P.Boomnathan		07.03.07	
							APPD	M.RAJAKUMAR		07.03.07	
DEPT	VL	SCALE	WEIGHT (KG).	REFERENCE INFORMATIONS			NO. OF				
320		NTS	72.0	CAD : F324536			THIRD				
TITLE							CARD CODE	DRAWING NO.		REV	
SPLIT RING							U 01	3-V-0000-24536		04	

REV	DATE	ALTERED	REV	DATE	ALTERED
04	19.04.18	R.P.SINGH CHD & APPD SSK & KRS	03	15.02.16	M.SRINIVASAN CHD & APPD SSK & KRS
SL.NO. 03 INCLUDED			NOTES SL.NO. 2 MODIFIED.		