



BHARAT HEAVY ELECTRICALS LIMITED
INDUSTRIAL VALVES PLANT
433, INDUSTRIAL COMPLEX
GOINDWAL SAHIB
DISTT. TARN TARAN- PUNJAB – 143422

No.BHEL:IVP:
SC:TOA:AD
2021-22/01
Dated
25.05.2021

NOTICE INVITING APPLICATIONS FOR REGISTRATION OF SUB CONTRACTORS

BHARAT HEAVY ELECTRICALS LIMITED [BHEL] is manufacturing Industrial Valves and other Boiler accessories at its Industrial Valves Plant, Goindwal Sahib unit. Vendors are required for job work for components of TOA Valves (Details as per enclosed list). Annual procurement value for the financial year FY2021-22 is Rs 5 Lac

Expression of interest and applications for registration are invited from sub-contractors (BHEL encourages procurement from Micro and Small Enterprises (MSEs), MSEs are requested to apply for registration) for doing the machining job of various components of TOA Valves. Various work centers involved in the machining jobs shall be CNC, VMC, Slotter. Chrome plating/nickel plating/Heat treatment/nitriding may also be required on certain components

TOA Valves

Machining of Body/Yoke castings, Bonnet, Disc and various other items such as Disc Nut, Stopper, Yoke stopper, Yoke clamp, Handle boss, Set Pin, Retaining Ring, Sunk Key etc. Some items may also require Tuffriding/Liquid Nitriding, chrome plating, nickel plating, heat treatment post machining. List of components, where machining vendors are required, is attached herewith as Annexure-I. Sample drawings of some components are also attached. S No of the list 6 and 15.

BHEL is looking for prospective Sub Contractors for above detailed job work for BHEL.

BHEL shall evaluate the vendors as per its established vendor selection, evaluation and registration procedure. Supplier registration can be done online <https://supplier.bhel.in/>

BHEL invites such vendors to visit its above located plant on any working day from Monday to Saturday between 0900 Hrs to 1730 Hrs and contact undersigned for any clarification regarding:

Items details and requirement		Vendor registration form/procedure
Vineet Kumar Manager (Sub Contracting)	Mukesh Kumar Dy.Manager (Sub Contracting)	Sahil Malhotra Dy.Manager (Sub-Contracting)
Phone: 01859-224625	01859-224644	01859-224669
Mobile: 099150 47504	081465 52387	098142 09180
E-mail: vineet.k@bhel.in	kumarmukesh@bhel.in	sahil@bhel.in

BHARAT HEAVY ELECTRICALS LIMITED INDUSTRIAL VALVES
PLANT, 433, INDUSTRIAL COMPLEX, GOINDWAL SAHIB,
DISTT. TARN TARAN, PUNJAB – 143 422

TOA Valves
List of components

S.No	Gr. No	Job/Component Description	Description of Valve/ Product (Used in)
1	G2313a	Body Rough	2.5-C1500-GLV-BW-HO-WC9
2	G2313b	Body Rough	3-C1500-GLV-BW-HO-WC9
3	G2303	Body Machining	2.5-C1500-GLV/GNV-BW-WCC/WC9
4	G2304	Body Machining	3-C1500-GLV/GNV-BW-WCC/WC9
5	G2308	Yoke Machining	2.5-C1500-GLV-HO/MO-WCC/WCB/WC9
6	G2345	Yoke Machining	3-C1500-GLV-BW-HO-WC9
7	G2309	Yoke Machining	4-C1500-GLV-HO/MO-WCC/WCB/WC9
8	G2310	Yoke Machining	5-C1500-GNV-BW-MO-WC9
9	G2481	Disc Final	3-C3500-GNV
10	G2315	Bonnet Rough	2" to 8" Class 1500
11	G2312a	Bonnet Final	2.5-C1500-GLV-BW-HO/MO-WCC/WC9
12	G2312b	Bonnet Final	3-C1500-GLV-BW-HO-WC9
13	G2312c	Bonnet Final	4-C1500-GLV-BW-HO-WCB
14	G2312d	Bonnet Final	5-C1500-GLV-BW-GO-WC9
15	G2306	Stem	2.5-C1500-GLV/GNV-HO/MO-WCC
16	G2307b	Stem	3-C1500-GLV/GNV-BW-HO/MO-WCB
17	G2307	Stem	4-C1500-GLV/GNV-BW-HO/MO-WCB
18	G2346	Stem Machining	5-C1500-GLV-BW-MO-WC9
19	G2314	Disc Rough	2" to 8" Class 1500
20	G2311a	Disc Final	2.5-C1500-GLV-BW-HO-WC9
21	G2311e	Disc Final	2.5-C1500-GNV-BW-MO-WCC
22	G2311b	Disc Final	3-C1500-GLV-BW-HO-WC9
23	G2311m	Disc Final	3-C1500-GNV-BW-MO-WCC
24	G2311c	Disc Final	4-C1500-GLV-BW-HO-WCB
25	G2311g	Disc Final	4-C1500-GNV-BW-MO-WCC
26	G2311d	Disc Final	5-C1500-GLV-BW-GO-WC9
27	G2311h	Disc Final	5-C1500-GNV-BW-MO-WC9
28	G2311i	Disc Final	6-C2500-GLV-BW-MO-WCC
29	G2311l	Disc Final	6-C2500-GNV-WCC
30	G2316a	Disc Nut	2.5-C1500-GLV-BW-HO-WC9
31	G2316b	Disc Nut	3-C1500-GLV-BW-HO-WC9
32	G2316c	Disc Nut	4-C1500-GLV-BW-HO-WCB
33	G2316d	Disc Nut	5-C1500-GLV-BW-GO-WC9
34	G2318a	2.5-C1500-GLV - CASTLE NUT-G041	2.5-C1500-GLV-BW-MO-WCC
35	G2318b	3-C1500-GLV - CASTLE NUT-G033	3-C1500-GLV-BW-MO-WCC

TOA Valves
List of components

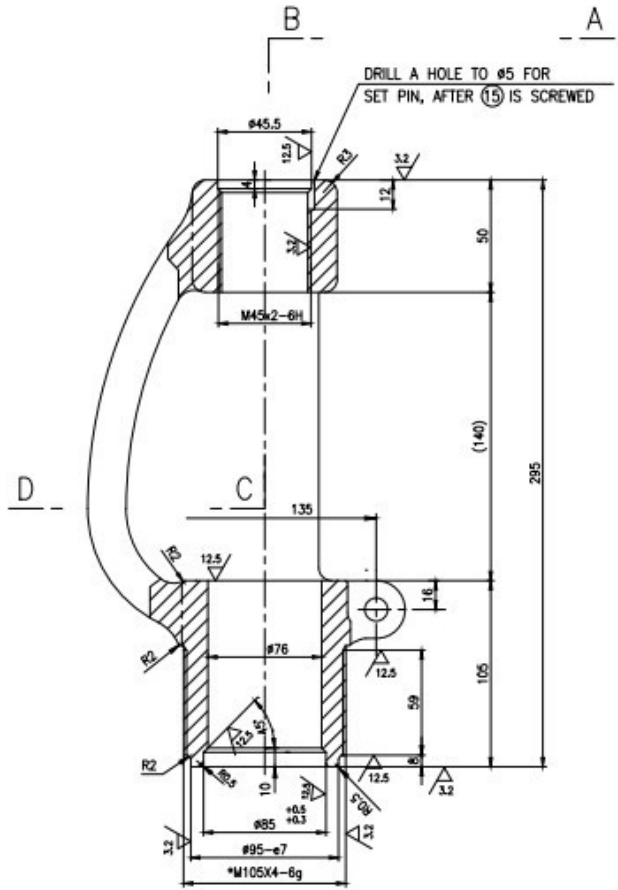
S.No	Gr. No	Job/Component Description	Description of Valve/ Product (Used in)
36	G2318c	4-C1500-GNV - CASTLE NUT-G001	4-C1500-GNV-BW-MO-WCC
37	G2318d	5-C1500-GLV - CASTLE NUT-G003	5-C1500-GNV-BW-MO-WC9
38	G2348a	2.5-C1500-GNV - GUIDE-R001	2.5-C1500-GNV-BW-MO-WCC
39	G2348d	3-C1500-GNV - GUIDE-R009	3-C1500-GNV-BW-MO-WCC
40	G2348c	4-C1500-GNV - GUIDE-R017	4-C1500-GNV-BW-MO-WCC
41	G2348b	5-C1500-GLV - GUIDE-R065	5-C1500-GNV-BW-MO-WC9
42	G2328a	Gland	2.5-C1500-GLV-BW-HO-WC9
43	G2328b	Gland	3-C1500-GLV-BW-HO-WC9
44	G2328c	Gland	4-C1500-GLV-BW-HO-WCB
45	G2328d	Gland	5-C1500-GLV-BW-GO-WC9
46	G2319a	Gland Flange	2.5-C1500-GLV-BW-HO-WC9
47	G2319b	Gland Flange	3-C1500-GLV-BW-HO-WC9
48	G2319c	Gland Flange	4-C1500-GLV-BW-HO-WCB
49	G2319d	Gland Flange	5-C1500-GLV-BW-GO-WC9
50	G2329a	PIN/SET PIN/KNOCK PIN	2" to 8" Class 1500
51	G2329b	PIN/SET PIN/KNOCK PIN	2" to 8" Class 1500
52	G2329c	PIN/SET PIN/KNOCK PIN	2" to 8" Class 1500
53	G2477	Nut	2.5-C1500-GNV-BW-HO-WCC
54	G2327a	Yoke Stopper	2.5-C1500-GLV-BW-HO-WC9
55	G2327b	Yoke Stopper	3-C1500-GLV-BW-HO-WC9
56	G2622	STOPPER RING-R009	2" to 3" Class 1500
57	G2621	Stopper Rod	2" to 3" Class 1500
58	G2326a	Stopper	2.5-C1500-GLV-BW-HO-WC9
59	G2326d	Stopper	3-C1500-GLV-BW-HO-WC9
60	G2326b	Stopper	4-C1500-GLV-BW-HO-WCB
61	G2327c	Yoke Stopper	4-C1500-GLV-BW-HO-WCB
62	G2326c	Stopper	5-C1500-GLV-BW-GO-WC9
63	G2324a	Eye Bolt	2.5/3-C1500-GLV/GNV-BW-WCC/WCB/WC9
64	G2324b	Eye Bolt	4-C1500-GLV-BW-HO-WCB
65	G2324c	Eye Bolt	5-C1500-GLV-BW-GO-WC9
66	G2320a	Handle boss	2.5-C1500-GLV-BW-HO-WC9
67	G2320b	Handle boss	4-C1500-GLV-BW-HO-WCB
68	G2330a	Bushing	2.5/3-C1500-GLV/GNV-BW-WCC/WCB/WC9
69	G2330b	Bushing	4/5-C1500-GLV-BW-HO-WCB

TOA Valves
List of components

S.No	Gr. No	Job/Component Description	Description of Valve/ Product (Used in)
70	G2317	Washer	2" to 8" Class 1500
71	G2321	Plate	2" to 8" Class 1500
72	G2349	Yoke Clamp	2" to 8" Class 1500
73	G2475	HAND WHEEL-G004	2.5-C1500-GLV-HO-WCC
74	G2325b	Sunk Key	4-C1500-GLV-BW-HO-WCB
75	G2347	Eye Bolt Clamp	5-C1500-GNV-BW-MO-WC9
76	G2480	Retaining ring	5-C1500-GNV-BW-MO-WC9
77	G2494	INTERMEDIATE FL.-G090	3/4-C1500-GNV-BW-MO-WCB
78	G2476	Grip	2.5-C1500-GNV-BW-HO-WCC
79	G2479	Lock plate	2.5-C1500-GNV-BW-HO-WCC
80	G2325a	Sunk Key	2.5/3-C1500-GLV/GNV-BW-WCC/WCB/WC9
81	G2478	Bolt	2.5-C1500-GNV-BW-HO-WCC

2-V-0000-15154/3
DRAWING NO.

ALL DIMENSIONS ARE IN MILLIMETRES. FOR TOLERANCES OF UNTOLERANCED DIMENSIONS DURING MANUFACTURE REFER RELEVANT OCP / OP



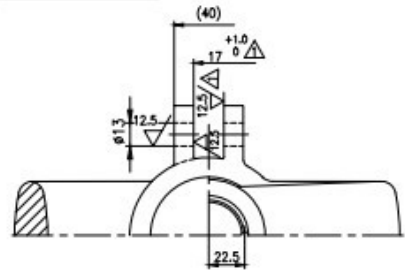
(12) $\sqrt{12.5}$ $\sqrt{3.2}$

#95-e7	-0.072
	-0.107

NOTES:

- * 1. Ni PLATING TO A THICKNESS OF 25 TO 35 MICRONS.
- 2. LATEST APPLICABLE QUALITY WORK INSTRUCTION SHALL BE FOLLOWED IN ALL RESPECTS.

SECTION ABCD



02	2-V-0047-15154/3	A217 WC6, NT PRODUCT ATTEST	931121170000	20					
01	2-V-0045-15154/3	A216 WC6, AN PRODUCT ATTEST	931121180000	10					
S/N	DRAWING NO.	MATL. SPECN.	COMP. CODE	SCRAP SORT					
#	DESCRIPTION	MATL CODE	MATL SPECN	HEAT TREATMENT	SCRAP SORT	NET WT (kg)	GROSS WT (kg)	DRAWING No	ITER No

CAUTION: The information on this document is the property of BHARAT HEAVY ELECTRICALS LTD. It must not be used in any way detrimental to the interest of the company.

TYPE OF PRODUCT OR NAME OF CUSTOMER/PROJECT

BHARAT HEAVY ELECTRICALS LTD.,
UNIT: HIGH PRESSURE BOILER PLANT,
TRUHHIRAPALLI-620014.

DRN	NAME	SIGN	DATE
CHD	S.SATHEES		24.10.13
APPD	K.RAJASEKHARAN		24.10.13

DEPT. VL. SCALE WEIGHT (KG). REFERENCE INFORMATION

305-120 N T S 8.78

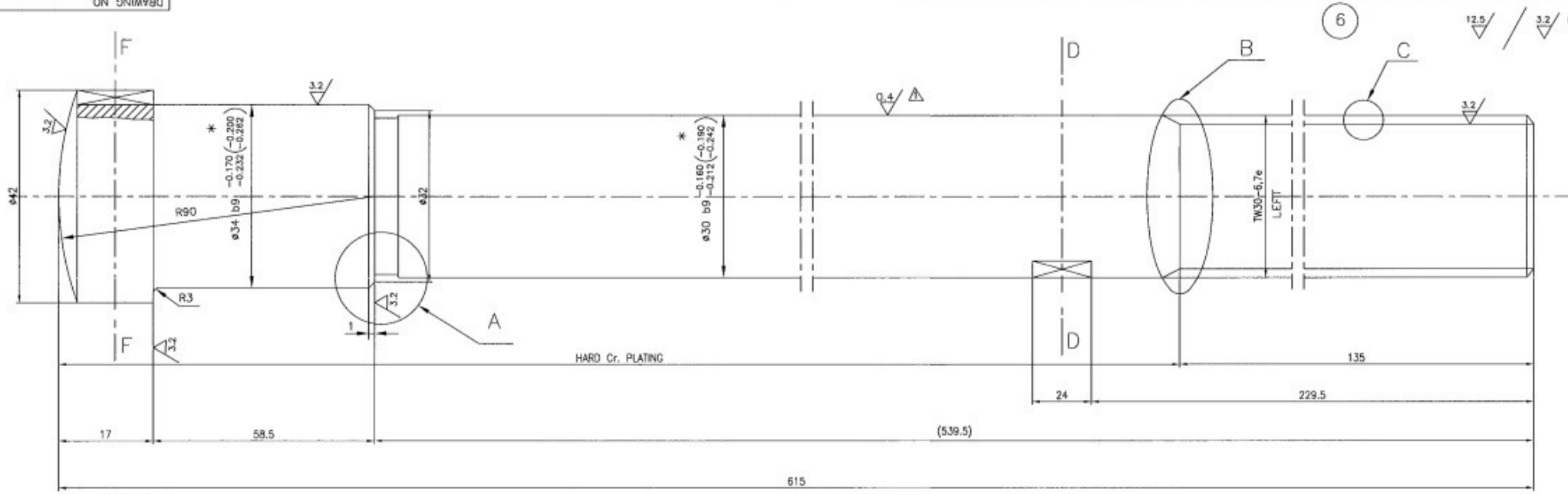
CODE 320

TITLE **YOKE** CARD CODE U 01 DRAWING NO. 2-V-0000-1515

80/1500CLASS

REDRAWN WITH REV.1 ON 24.10.13

REV	DATE	ALTERED	CR
3	24.10.13	CHD & APPD	SSK & KRS
ZONE	DIMENSION 17^0 & 12.5 INCLUDED		
DCP No.801630			



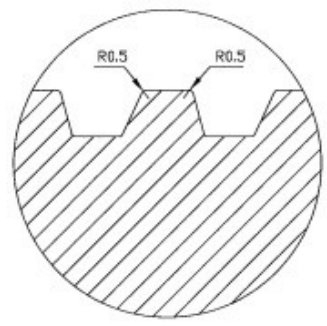
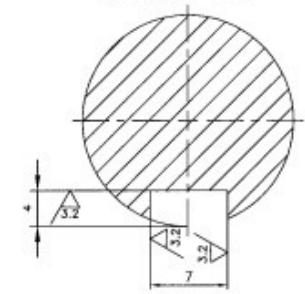
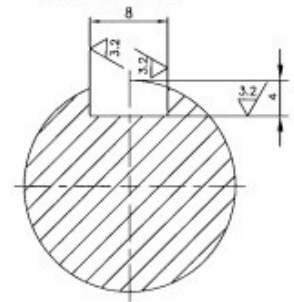
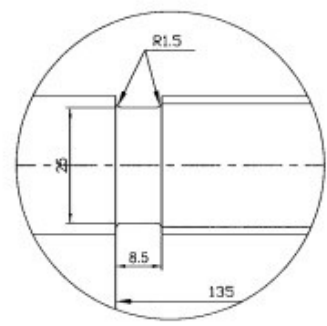
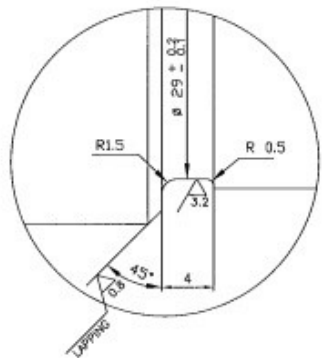
DETAIL-A

ALTERNATE TO DETAIL-B

SECTION-FF

SECTION-DD

DETAIL-C



THE ABOVE UNDERCUT SHALL BE SMOOTHLY FINISHED SO THAT THE CUT SHOULD NOT BE NOTCH EFFECTED

NOTES:

01. HARDNESS 241 TO 321 BHN.
02. MATERIAL SHOULD BE AS PER LATEST APPLICABLE QUALITY WORK INSTRUCTION
03. * DIMENSION PRIOR TO PLATING

1	2-V-R074-15707/1	OHTARON_QT PRODUCT ATTEST	#50X630	931169650000	9.72	40
SL. NO.	DRAWING NUMBER	MATERIAL SPECN.	SUGG. SIZE	COMP. CODE MATL. CODE	GROSS WT.(Kg)	SCRAP SORT

No	DESCRIPTION	MATL CODE	MATL SPECN	HEAT TREATMENT	SCRAP SORT	NET WT (Kg)	GROSS WT (Kg)	DRAWING No	ITEM No

TYPE OF PRODUCT OR NAME OF CUSTOMER/PROJECT: TA RETRACED WITH REV.1 ON 24.12.03

	BHARAT HEAVY ELECTRICALS LTD., UNIT: HIGH PRESSURE BOILER PLANT, TIRUCHIRAPALLI-620014.		DWN V.Bairavan CHD K.Rajasekar APPD M.Rajakumar	NAME V.Bairavan SIGN DATE 24.12.03 24.12.03 24.12.03	NO.OF VAR. 1
	DEPT VL	SCALE NTS	WEIGHT (KG) 3.54	REFERENCE INFORMATION	
	CODE 320	DRAWING NO. 2-V-R074-15707		REV 1	

REV	DATE	ALTERED BY
1	24.12.03	CHD & APPOMRK

CAUTION: The information on this document is the property of BHARAT HEAVY ELECTRICALS LTD. It must not be used directly or indirectly in any way without the prior consent of the company.

TITLE: STEM	CARD CODE: U 01	DRAWING NO.: 2-V-R074-15707	REV: 1
-------------	-----------------	-----------------------------	--------