

2 x 800 MW Supercritical Coal Based Uppur Thermal Power Project

VOLUME II

TECHNICAL SPECIFICATION

FOR

FRP CABLE TRAYS & ACCESSORIES

SPECIFICATION NO: PE-TS-425-507-E022

REVISION: 00



BHARAT HEAVY ELECTRICALS LIMITED
POWER SECTOR
PROJECT ENGINEERING MANAGEMENT
NOIDA, UP (INDIA) – 201301



**TECHNICAL SPECIFICATION FOR
FRP CABLE TRAYS &
ACCESSORIES**

SPECIFICATION NO. PE-TS-425-507-E022

REVISION 00

DATE: 11.06.2018

SHEET 1 OF 1

CONTENTS

Sl. No.	DESCRIPTION	NO. OF SHEETS
1.0	SECTION – I	
	COMPLIANCE CERTIFICATE	01
	SPECIFIC TECHNICAL REQUIREMENT	01
	DATA SHEET -A	04
2.0	SECTION- 'II'	
	STANDARD TECHNICAL REQUIREMENTS	03
	TYPICAL DETAILS OF CABLE TRAYS & ACCESSORIES	24
TOTAL SHEETS INCLUDING COVER SHEET, CONTENT/SEPARATOR SHEET =		36



**TECHNICAL SPECIFICATION FOR
FRP CABLE TRAYS &
ACCESSORIES**

SPECIFICATION NO. PE-TS-425-507-E022

VOLUME-II

SECTION I

REVISION 00

DATE: 11.06.2018

SECTION – I

SPECIFIC TECHNICAL REQUIREMENTS



**TECHNICAL SPECIFICATION FOR
FRP CABLE TRAYS &
ACCESSORIES**

SPECIFICATION NO. PE-TS-425-507-E022

VOLUME-II

SECTION I

REVISION 00

DATE: 11.06.2018

SHEET 1 OF 1

COMPLIANCE CERTIFICATE

The bidder shall confirm compliance to the following by signing/ stamping this compliance certificate and furnishing same with the offer.

1. The scope of supply, technical details, construction features, design parameters etc. shall be as per technical specification & there are no exclusion/ deviation with regard to same
2. There are no deviation with respect to specification other than those furnished in the 'schedule of deviations'
3. Only those technical submittals which are specifically asked for in NIT to be submitted at tender stage shall be considered as part of offer. Any other submission, even if made, shall not be considered as part of offer.
4. Any comments/ clarifications on technical/ inspection requirements furnished as part of bidder's covering letter shall not be considered by BHEL, and bidder's offer shall be construed to be in conformance with the specification.
5. Any changes made by the bidder in the price schedule with respect to the description/ quantities from those given in 'BOQ-Cum-Price schedule' of the specification shall not be considered (i.e., technical description & quantities as per the specification shall prevail).

BIDDER'S STAMP & SIGNATURE



**TECHNICAL SPECIFICATION FOR
FRP CABLE TRAYS &
ACCESSORIES**

SPECIFICATION NO. PE-TS-425-507-E022

VOLUME-II

SECTION I

REVISION 00

DATE: 11.06.2018

SHEET 1 OF 1

1.0 PURPOSE

This specification is intended for finalization of contract between BHEL PEM and Bidder for FRP Cable trays & Accessories. Standard technical detail as indicated in the specification shall be agreed upon between BHEL PEM and Bidder.

2.0 SCOPE OF ENQUIRY

- 2.1 Design, manufacture, Inspection and Testing at Manufacturer's works, proper packing and delivery to site of cable trays & accessories conforming to this specification.
- 2.2 It is not the intent to specify herein all the details of design & manufacture of material. However, the material shall, conform in all respects to high standard of design, engineering and workmanship and shall be capable of performing in continuous commercial operation at site conditions.
- 2.3 Technical requirements of FRP cable trays & accessories are indicated in Data Sheet-A & Section-II.
- 2.4 The stipulation of Data Sheet-A shall prevail in case of any conflict between the stipulations of Data Sheet-A & Section-II.

3.0 BILL OF QUANTITIES

The bidder to quote for items as per 'BOQ-cum-Price Schedule' attached with NIT.

4.0 DRAWINGS & DOCUMENTS TO BE SUBMITTED

- 4.1 Following documents/drawings shall be submitted after placement of order for BHEL & customer's approval:-

Sl. No.	Drawings / Document Description	Document Number	Document Type	First Submission	Re submission
1	Technical Data Sheet for FRP Cable trays & Accessories	PE-V0-421-507-E022	Primary	Within 1 week of award of contract	Within 1 week of comments
2	GA drawings of FRP Cable Trays & Accessories	PE-V0-421-507-E023	Primary	Within 1 week of award of contract	Within 1 week of comments
3	Manufacturing Quality Plan for FRP Cable Trays & Accessories	PE-V0-421-507-E907	Primary	Within 1 week of award of contract	Within 1 week of comments
4	BOQ of Coupler plates, Bolts, Washers & Nuts for lot wise ordered quantity.	PE-V0-421-507-E024	Secondary	Within 1 week of lot clearance	Within 1 week of comments
5	Loading Calculations for each tray size	PE-V0-421-507-E025	Secondary	Within 2 week of award of contract	Within 1 week of comments
6.	Type Test Reports	PE-V0-421-507-E026	Secondary	Within 2 week of award of contract	Within 1 week of comments
7.	Field Quality Plan	PE-V0-421-507-E026	Secondary	Within 2 week of award of contract	Within 1 week of comments

- 4.2 Drawings/ documents shall be submitted through Document Management System (DMS).



**TECHNICAL SPECIFICATION FOR
FRP CABLE TRAY &
ACCESSORIES**

SPECIFICATION NO. PE-TS-425-507-E022

VOLUME II

SECTION II

REVISION 00

DATE: 11.06.2018

SECTION-II

STANDARD TECHNICAL REQUIREMENTS



**TECHNICAL SPECIFICATION FOR
FRP CABLE TRAY &
ACCESSORIES**

SPECIFICATION NO. PE-TS-425-507-E022

VOLUME II

SECTION II

REVISION 00

DATE: 11.06.2018

Sheet 1 of 2

1.0 CODES & STANDARDS

- 1.1 The material shall comply with all currently applicable safety codes and statutory regulations of India as well as of the locality where the material is to be installed.
- 1.2 The design, material, construction, manufacture, inspection, testing and performance of FRP Cable Trays & Accessories shall conform to the latest revision of relevant standards and codes of practices as per Data sheet-A
- 1.3 In case of conflict between the applicable reference standard and this specification, this specification shall govern.

2.0 TECHNICAL REQUIREMENTS

- 2.1 Cable trays & accessories shall be of two types, namely ladder type and perforated type. Technical particulars are specified in Data Sheet-A and drawings enclosed with this specification. Minor fabrication detail changes which do not affect the material /dimensional aspect of the equipment, shall be subject to BHEL/owner's approval without any commercial implication.
- 2.2 Coupler plates shall be provided for connecting tray ends to other straight trays, horizontal elbows, vertical elbows, tees, cross, reducers etc. The number of coupler plates, washers, nuts & bolts to be supplied shall be as per Data Sheet-A.
- 2.3 Necessary fasteners shall be provided along with each length of cable tray as specified in drawings enclosed.
- 2.4 The width of the tray covers (where provided) shall be suitable for the width of trays. Suitable bolting arrangement shall be supplied for attaching the cover to the cable trays, elbows, reducers, tees etc. as per the drawing enclosed.
- 2.5 All FRP type cable trays & accessories shall be corrosion/ chemical resistant, weather resistant, easy to drill & cut, lightweight, high strength & flame retardant. All the composite materials shall have UV light inhibiting chemical additives to resist degradation from ultra violet light.
- 2.6 The side runners and all accessories shall have the oblong holes on each end for fixing the coupler plates. The connection between two sections of the FRP cable trays or a section of cable tray with associated accessories shall be done by bolting only. Nuts, bolts and washers shall be of stainless steel SS 304.

3.0 QUALITY ASSURANCE, TESTING AND INSPECTION

- 3.1 Successful bidder shall submit 'Manufacturing Quality Plan' after award of contract, which shall include various quality checks for the FRP Type Cable Tray & Accessories offered. The same shall be subject to the approval of BHEL/Customer without any commercial implication.
- 3.2 All materials shall be procured, manufactured, inspected and tested by vendor/ sub-vendor as per approved quality plan.
- 3.3 The supplier shall perform all tests necessary to ensure that the material and workmanship conform to the relevant standards and comply with the requirements of the specification. Charges for all these tests for all the equipment & components shall be deemed to be included in the bid price.
- 3.2 Successful bidder shall submit type test reports for test mentioned in the Data sheet-A, carried



**TECHNICAL SPECIFICATION FOR
FRP CABLE TRAY &
ACCESSORIES**

SPECIFICATION NO. PE-TS-425-507-E022

VOLUME II

SECTION II

REVISION 00

DATE: 11.06.2018

Sheet 2 of 2

out in within last five years of the date of bid opening. These reports should be for the tests conducted either in government approved third party laboratory or witnessed by client (such as major utilities/ industries) on identical/ similar item to those ordered under this contract

- 3.4 In case bidder is not able to submit report of type test(s) conducted in last five years, or in case type tests report(s) are not found to be meeting the specification/ relevant standard requirements, then all such tests shall be conducted under this contract by the bidder free of cost to BHEL, and reports shall be submitted for approval. No charges shall be paid for testing under such circumstances. BHEL reserves the right to witness the testing for which due notice shall be given by the vendor.

4.0 PACKING

The material shall be wrapped in polythene sheets before being placed in crates/cases to ensure protection against damage during transit, storage for prolonged periods and handling. Crates / cases shall have skid bottom for handling. Special notations such as 'This side Up', 'Centre of Gravity', 'Weight', 'Owner's particulars', 'Purchase order number' etc. shall be clearly marked on the package together.



TECHNICAL SPECIFICATION FOR FRP CABLE TRAYS & ACCESSORIES

SPECIFICATION NO. PE-TS-425-507-E022

VOLUME II

SECTION I

REVISION 00

DATE: 11.06.2018

SHEET 1 of 4

DATASHEET-A

1.0 APPLICABLE STANDARDS

- a) NEMA FG1-1993 National Electrical Manufacture's Association – Fibre Glass Cable Tray System.
b) UL 94 Standard for safety of flammability of plastic materials for parts in devices and appliance testing.
c) IS: 4249 Classification & methods of tests for non-ignitable and self-extinguishing properties of solid electrical insulating materials
c) IS: 6746 Unsaturated polyester resin system for low pressure fibre glass reinforced plastic.
d) IS: 14399 Hot press moulded thermosetting glass fibre reinforced polyester resin
d) ASTM -D 149 Standard test method for dielectric breakdown voltage and dielectric strength of solid electrical insulating materials at commercial power frequencies).
f) ASTM-D 256 Standard test methods for determining the izod pendulum impact resistance of plastics.
g) ASTM-D 570 Standard test method for water absorption of plastics
g) ASTM-D 635 Standard test method for rate of burning and/or extent and time of burning of plastics in a horizontal position.
h) ASTM-D 638 Standard test method for tensile properties of plastics.
h) ASTM-D 695 Standard test method for compressive properties of rigid plastics
i) ASTM-D 790 Standard test methods for flexural properties of unreinforced and reinforced plastics and electrical insulating materials.
j) ASTM-D 2863 Standard test method for measuring the minimum oxygen concentration to support candle-like combustion of plastics (oxygen index).
k) ASTM - E 84 Standard test method for surface burning characteristics of building materials.
l) ASTM - G 154 Standard practice for operating fluorescent light apparatus for UV exposure of non-metallic materials
m) IEC 60695-2 Glowing/hot-wire based test methods - Glow-wire flammability test method for end-products (GWEPT)
n) ASTM-D-257 D-C Resistance or Conductance of Insulating Materials

2.0 CABLE TRAYS & ACCESSORIES

- 2.1 Material : Light weight, high strength, Antistatic, anti-corrosion, chemical resistant & ultraviolet resistant FRP
- 2.2 Type : FRP Ladder Type
FRP Perforated Type
- 2.3 Manufacturing Process : Pultrusion using automated pultrusion machines
- 2.4 Glass Content : minimum 55%
- 2.5 Resin to be used : Corrosion & ultraviolet resistant resin, Flame retardant polyester resin
- 2.6 Standard Length of Straight Length of Cable Trays : 3.0 meters
- 2.7 Standard Width (mm) : 600 450 300 150 (Ladder Type)
600 450 300 150 100 50 (Perforated Type)
- 2.8 Construction : Conforming to enclosed drawing (PE-DG-425-507-E005)



TECHNICAL SPECIFICATION FOR FRP CABLE TRAYS & ACCESSORIES

SPECIFICATION NO. PE-TS-425-507-E022

VOLUME II

SECTION I

REVISION 00

DATE: 11.06.2018

SHEET 2 of 4

2.9 Bending Radius of
Accessories (in mm) : 600 mm

2.10 Tolerance in length/width : As per NEMA FG-1-1993

2.11 Loading on cable trays
at 1500mm support span : For ladder type trays

600mm Width tray: 90 Kg/m

450mm Width tray: 75 Kg/m

300mm Width tray: 60 Kg/m

150mm Width tray: 30 Kg/m

In addition to 80Kg point load at mid span for trays other than 150W
trays

For perforated type trays

600mm Width tray: 90 Kg/m

450mm Width tray: 75 Kg/m

300mm Width tray: 60 Kg/m

150mm Width tray: 30 Kg/m

100mm Width tray: 15 Kg/m

50mm Width tray: 7.5 Kg/m

In addition to 80Kg point load at mid span for 600mm, 450mm &
300mm wide trays

3.0 FITTINGS

End connections : Through Coupler plates
(Side Coupler Plates shall be provided as part of cable tray &
accessories supply with bolts, nuts, washers etc)

4.0 TRAY COVERS

a) Type : Non-Perforated type.

b) Material : Same as cable trays

c) Width : Suitable for width of cable trays.

d) Tolerance in length/
width : Same as cable trays.

5.0 SHEET THICKNESS

a) For cable trays &
Accessories : 4.0 mm

b) For cable tray cover : 3.0 mm

c) For Coupler plate : 4.0 mm

d) Tolerance in Thickness : No negative tolerance is permitted.



**TECHNICAL SPECIFICATION
FOR FRP CABLE TRAYS &
ACCESSORIES**

SPECIFICATION NO. PE-TS-425-507-E022

VOLUME II

SECTION I

REVISION 00

DATE: 11.06.2018

SHEET 3 of 4

6.0 Test Requirements

6.1 Type test certificate shall be provided for following

- a) Flame Spread ($\leq 25\text{mm}$ and smoke density index ≤ 450) as per ASTM E-84 Class 1
- b) Very Low flammability as per IS 6746
- c) Anti-Static, less surface resistivity as per ASTM D257 (10^9 ohms per square $<$ Surface resistivity $< 10^{12}$ ohms per square)
- d) UV resistance as per ASTM G154 (For 1000 hours minimum, with tensile strength test which shall not reduce by more than 7% after UV exposure)
- e) Resistance to heat and fire as per IEC 60695-2-12 (at 960-degree temperature)
- f) Oxygen index shall be minimum 30% as per ASTM-D-2863.
- g) Type test report for electrical and mechanical properties as per 6.3, 6.4 & 6.5 below

6.2 FRP trays shall be tested as per NEMA-FGI-1993, ASTM D635, and ASTM-D2863 etc. Following test shall be carried out as acceptance test

- a) Destruction load test
- b) Deflection Test
- c) Glass content test
- d) Oxygen Index Test
- e) Flammability Test

6.3 Mechanical Properties of FRP pultruded sections:

- | | | |
|-------------------------------|---|--|
| a) Ultimate tensile strength | : | 30000 PSI Longitudinal Direction |
| b) Tensile modulus | : | 2.5×10^6 PSI Longitudinal Direction |
| c) Flexural strength at break | : | 30000 PSI Longitudinal Direction |
| d) Flexural Modulus | : | 1.6×10^6 PSI Longitudinal Direction |
| e) Izod impact | : | 25 Ft-LBS Longitudinal Direction |
| f) Compressive strength | : | 30000 PSI Longitudinal Direction |
| g) Compressive modulus | : | 2.5×10^6 PSI Longitudinal Direction |
| h) Bar col hardness | : | minimum 45 Longitudinal Direction |

6.4 Electrical Properties of FRP pultruded sections:

- | | | |
|------------------------|---|----------------------|
| a) Dielectric strength | : | Axial: 30-45 Kv/25mm |
| | : | Radial 10-15 Kv/mm |
| b) Arc Resistance | : | > 120 seconds |



**TECHNICAL SPECIFICATION
FOR FRP CABLE TRAYS &
ACCESSORIES**

SPECIFICATION NO. PE-TS-425-507-E022

VOLUME II

SECTION I

REVISION 00

DATE: 11.06.2018

SHEET 4 of 4


6.5 Water Absorption : 0.6% maximum by weight

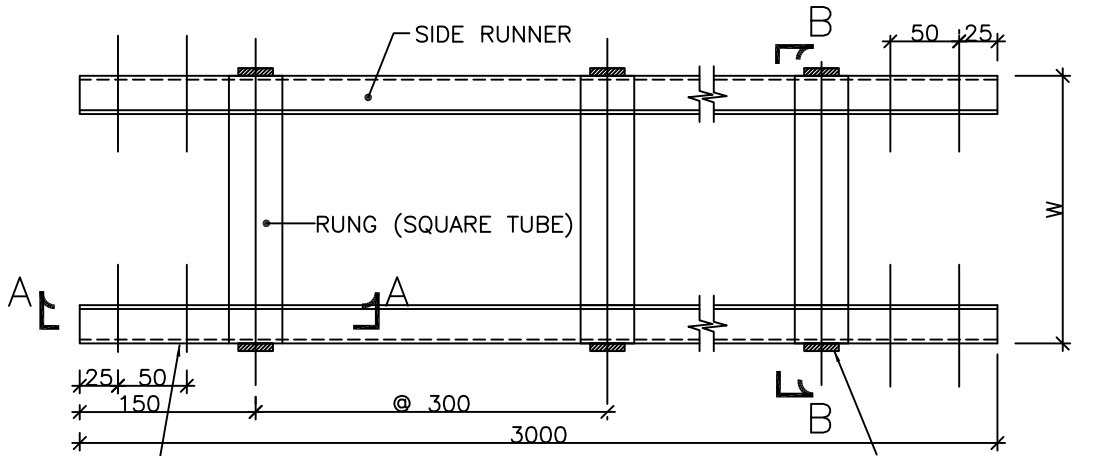
7.0 NUMBER OF COUPLER PLATES, BOLTS, WASHERS & NUTS REQUIRED FOR EACH CABLE TRAY SECTION (3.0 MTRS)

Sl. No.	NAME OF ITEM	COUPLER PLATE (nos.)	NUTS (nos.)	WASHERS (nos.)	BOLTS (nos.)
1	Cable tray of standard length 3.0 meters	4	16	32	16

NOTE: - Based on above table, no. of coupler plates, bolts, washers & nuts shall be calculated for the offered lot. Over & above the calculated quantity, additional 5% coupler plates & 10% bolts, washers & nuts shall be supplied by the bidder.

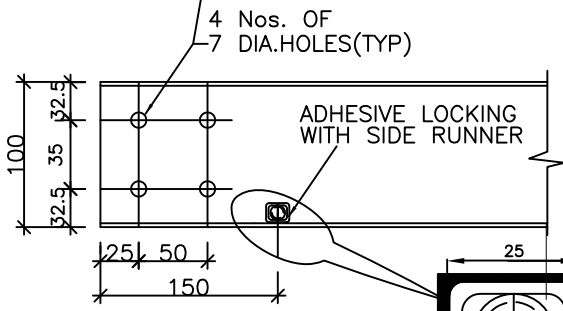
TYPICAL DETAILS OF FRP TYPE CABLE TRAYS AND ACCESSORIES

JOB NO.		BHARAT HEAVY ELECTRICALS LIMITED POWER SECTOR PROJECT ENGINEERING MANAGEMENT NOIDA(U.P) INDIA	DWG. NO. PE-DG-425 -507-E005
		SHT. 01 OF 18	

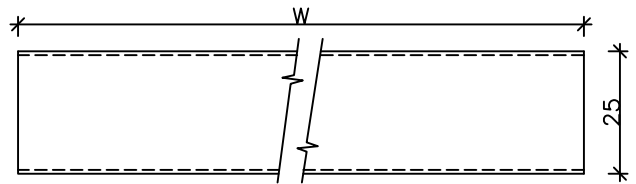


FRP LADDER TYPE CABLE TRAY

MECHANICAL LOCKING
SUITABLE TO WITHSTAND
LOADING SPECIFIED IN
DATA SHEET-A

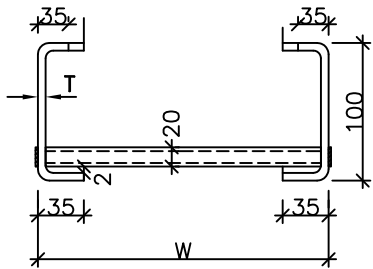


SEC-AA

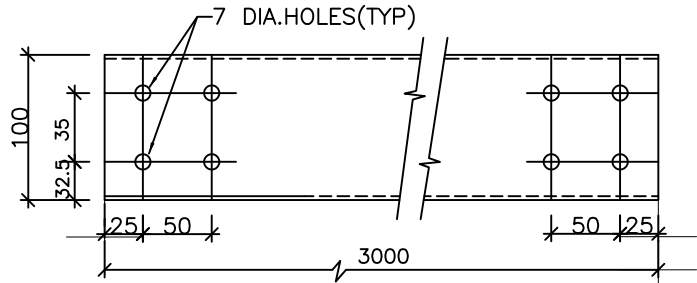


RUNG (SQUARE TUBE)

MECHANICAL LOCKING OF
RUNG SQUARE TUBE WITH
SIDE RUNNER



SEC-BB



SIDE RUNNER

W	150	300	450	600
T	4	4	4	4
t	4	4	4	4

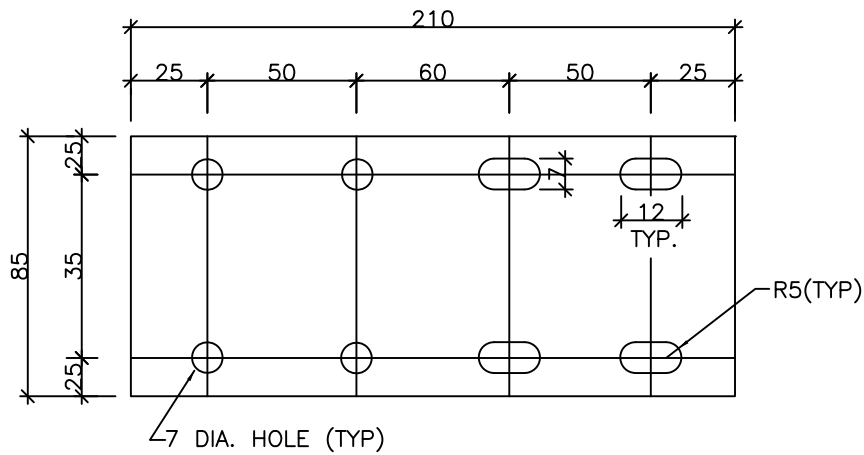
FOR GENERAL NOTES REFER SHEET 18 OF 18



TYPICAL DETAILS OF FRP TYPE CABLE
TRAYS AND ACCESSORIES

DWG. NO.
PE-DG-425-507-E005

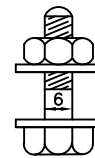
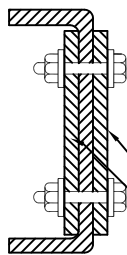
SHT. 2 OF 18 REV. 00



**FRP SIDE COUPLER PLATE FOR
FRP LADDER/PERFORATED TYPE TRAYS**

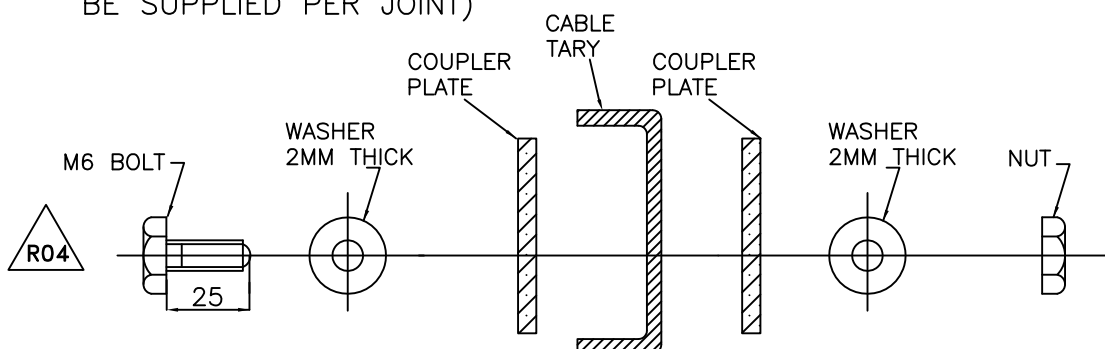
(600/450/300/150W TRAYS)

QTY. REQUIRED/TRAY SECTION : 4 NOS.



QTY. REQD/TRAY SECTION
6A) 16 NOS. M6 BOLTS
B) 16 NOS. NUTS
C) 32 NOS. WASHERS

(2 NOS. COUPLER PLATES
OF 4 MM THICKNESS TO
BE SUPPLIED PER JOINT)



SEQUENCE OF M6 BOLT, WASHER, NUT, COUPLER PLATE & CABLE TRAY
FOR TYPICAL CABLE TRAY JOINT

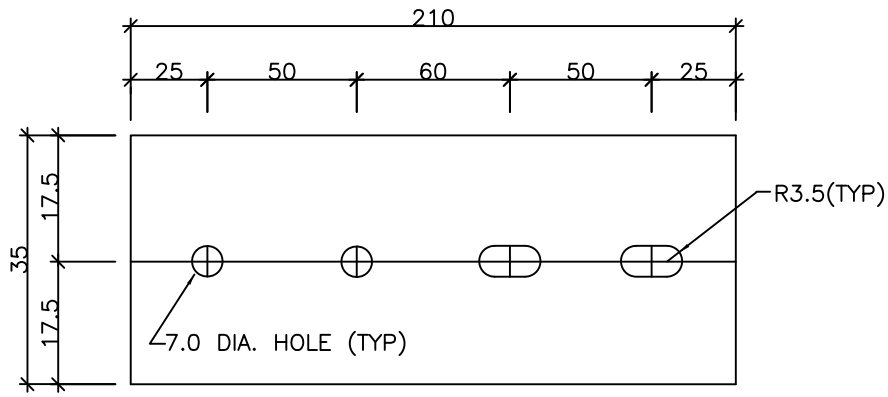
FOR GENERAL NOTES REFER SHEET 18 OF 18



TYPICAL DETAILS OF FRP TYPE CABLE
TRAYS AND ACCESSORIES

DWG. NO.
PE-DG-425-507-E005

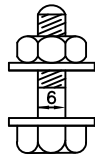
SHT. 03 OF 18 REV. 00



**FRP SIDE COUPLER PLATE FOR
FRP PERFORATED TYPE TRAYS**

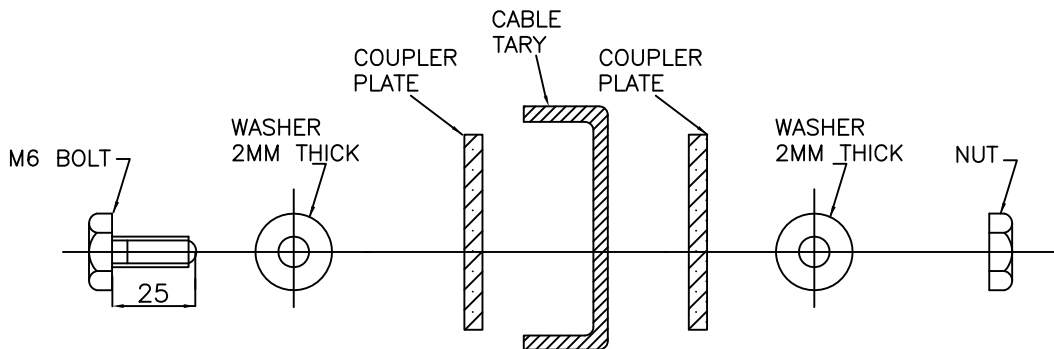
(50/100W TRAYS)

QTY. REQD/TRAY SECTION : 4 NOS.



QTY. REQD/TRAY SECTION

- A) 8 NOS. M6 BOLTS
- B) 8 NOS. NUTS
- C) 16 NOS. WASHERS



SEQUENCE OF M6 BOLT, WASHER, NUT, COUPLER PLATE & CABLE TRAY

FOR TYPICAL CABLE TRAY JOINT

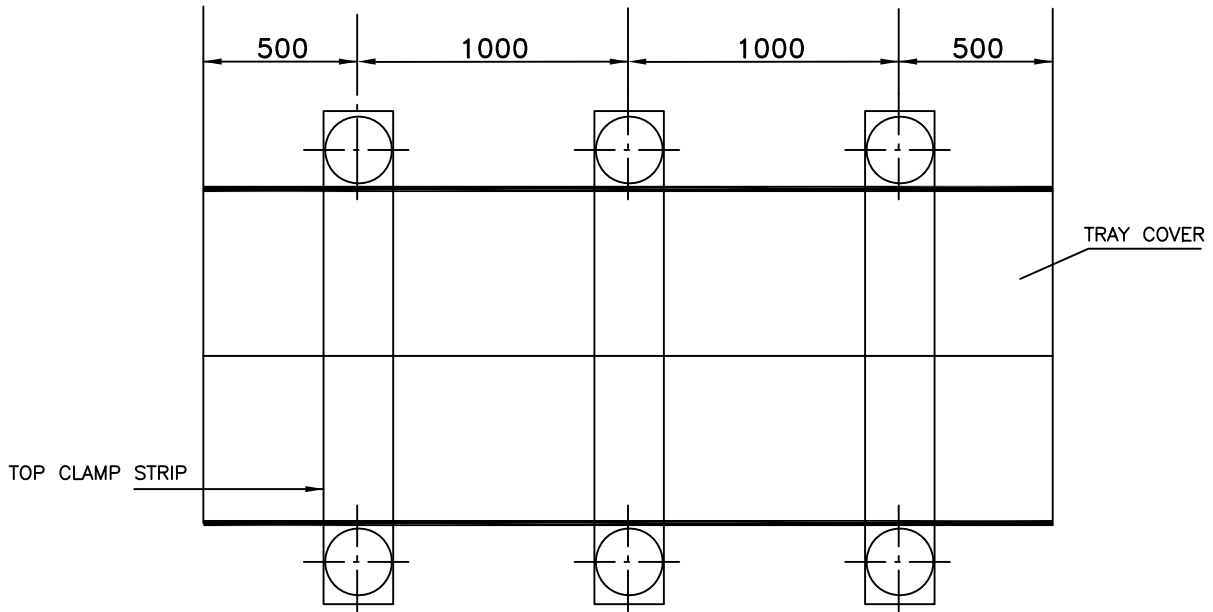
FOR GENERAL NOTES REFER SHEET 18 OF 18



TYPICAL DETAILS OF FRP TYPE CABLE
TRAYS AND ACCESSORIES

DWG. NO.
PE-DG-425-507-E005

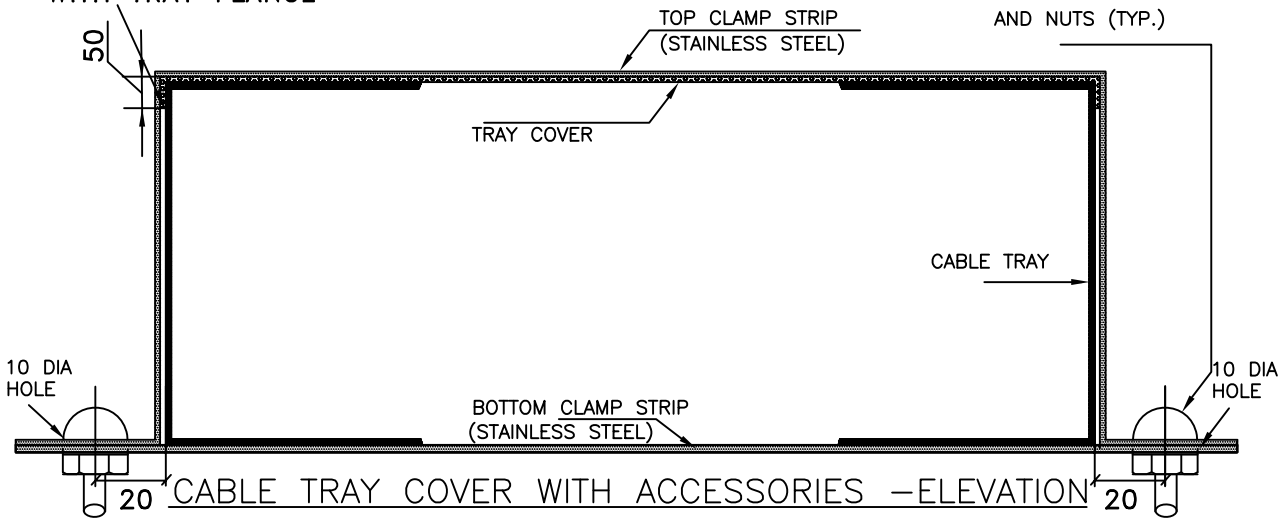
SHT. 03a OF 18 REV. 00



CABLE TRAY COVER WITH ACCESSORIES –PLAN

(OVER LAP PORTION OF TRAY COVER WITH TRAY FLANGE

8 DIA ROUND HEADED BOLT WITH WASHERS AND NUTS (TYP.)



TRAY WIDTH(W)	TOP CLAMP SIZE (LxWxT)	BOTTOM CLAMP SIZE (LxWxT)
600	900X20X2	680X20X2
450	750X20X2	530X20X2
300	600X20X2	380X20X2
150	450X20X2	230X20X2

CABLE TRAY COVER SHALL INCLUDE 1 NO. OF TRAY COVER OF 3000MM LENGTH ALONG WITH 3 NOS. OF TOP CLAMP STRIP, 3 NOS. BOTTOM CLAMP STRIP AND 6 NOS. OF BOLTS ALONG WITH NUTS & WASHERS.

CABLE TRAY COVER

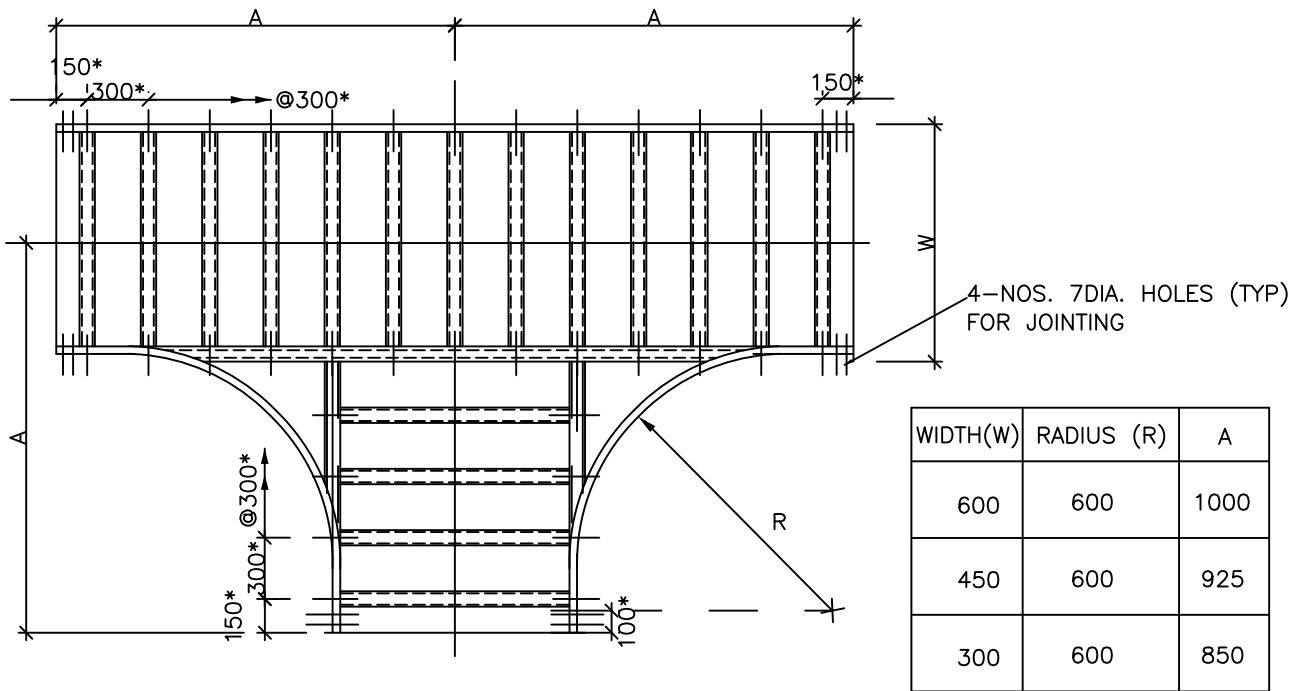
FOR GENERAL NOTES REFER SHEET 18 OF 18



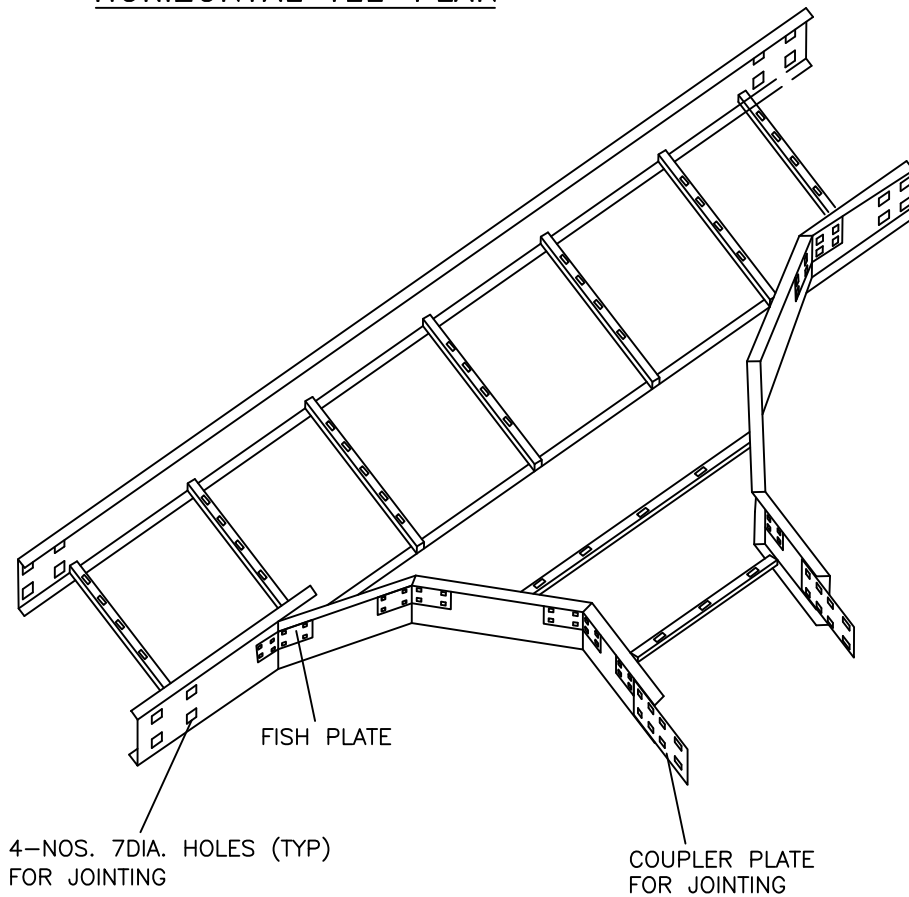
TYPICAL DETAILS OF FRP TYPE CABLE TRAYS AND ACCESSORIES

DWG. NO.
PE-DG-425-507-E005

SHT. 04 OF 18 REV. 00



HORIZONTAL TEE-PLAN



HORIZONTAL TEE

* may vary as per FRP tray vendors design

LADDER TYPE ACCESSORIES

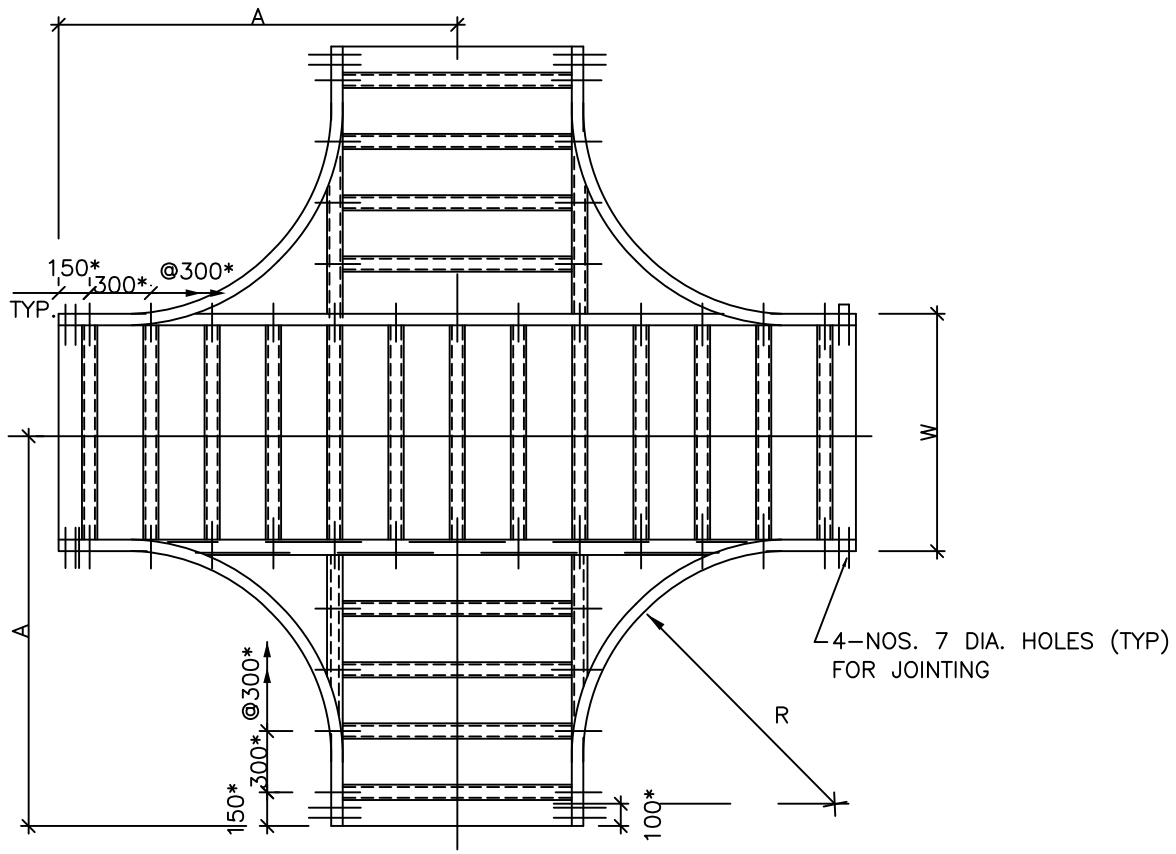
FOR GENERAL NOTES REFER SHEET 18 OF 18



TYPICAL DETAILS OF FRP TYPE CABLE TRAYS AND ACCESSORIES

DWG. NO.
PE-DG-425-507-E005

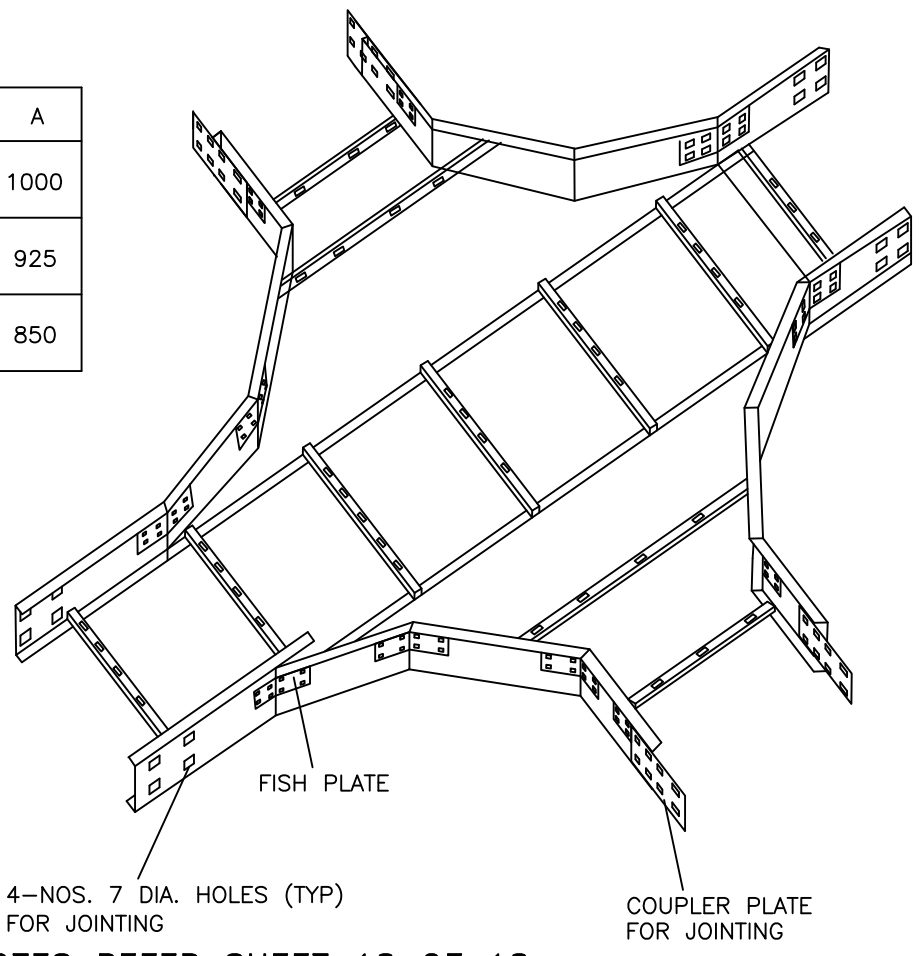
SHT. 05 OF 18 REV. 00



HORIZONTAL CROSS-PLAN

WIDTH(W)	RADIUS (R)	A
600	600	1000
450	600	925
300	600	850

* may vary as per FRP tray vendors design



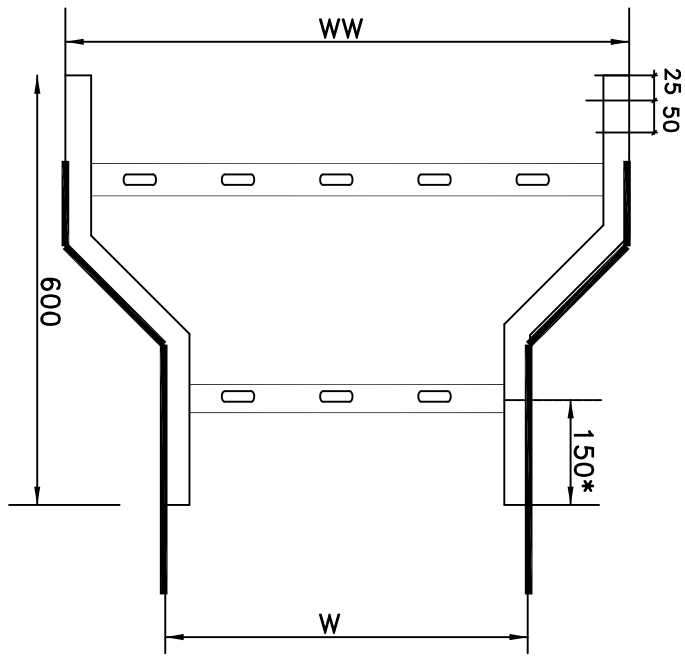
FOR GENERAL NOTES REFER SHEET 18 OF 18



TYPICAL DETAILS OF FRP TYPE CABLE TRAYS AND ACCESSORIES

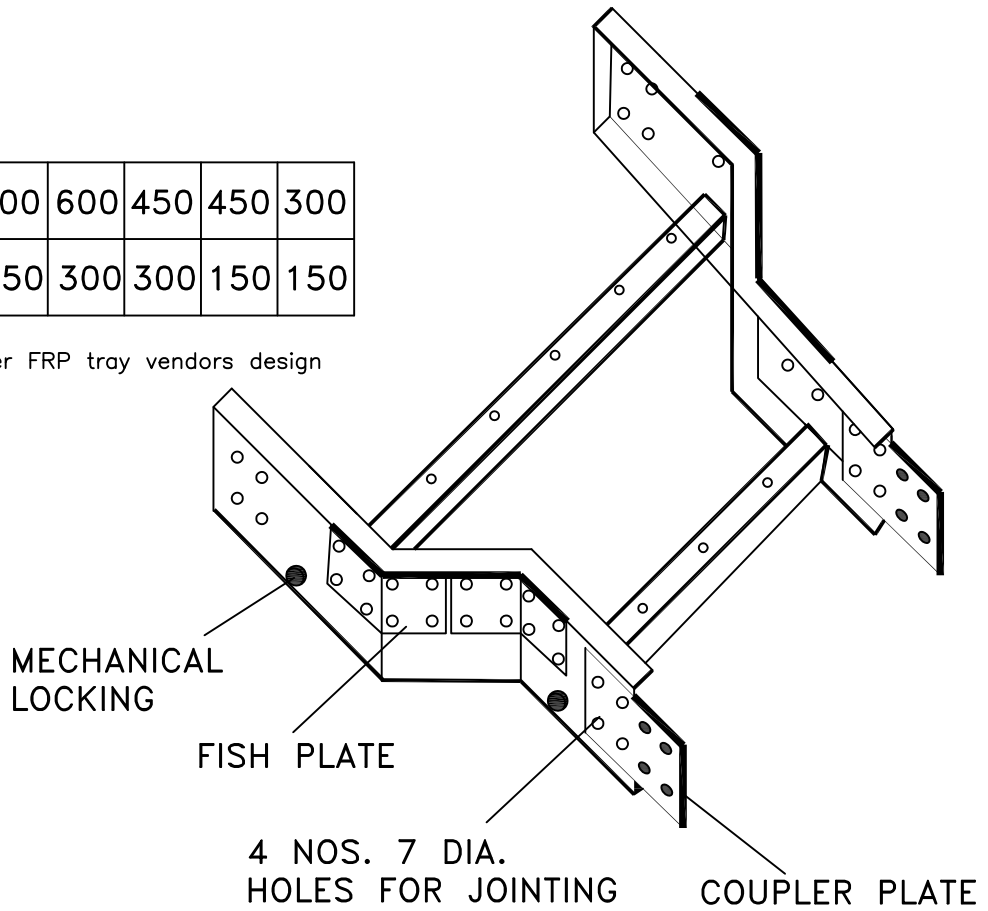
DWG. NO.
PE-DG-425-507-E005

SHT. 06 OF 18 REV. 00



WIDTH	WW	600	600	450	450	300
	W	450	300	300	150	150

* may vary as per FRP tray vendors design



REDUCER-LADDER TYPE

LADDER TYPE ACCESSORIES

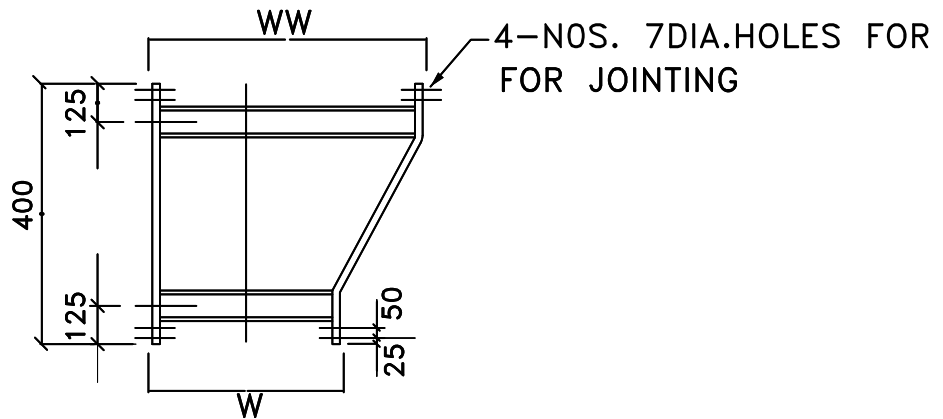
FOR GENERAL NOTES REFER SHEET 18 OF 18



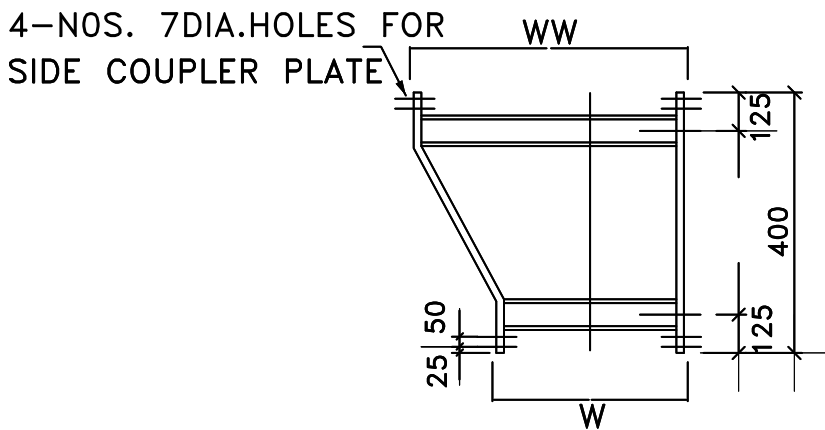
TYPICAL DETAILS OF FRP TYPE CABLE TRAYS AND ACCESSORIES

DWG. NO.
PE-DG-425-507-E005

SHT. 07 OF 18 REV. 00



LEFT HAND REDUCER-PLAN



RIGHT HAND REDUCER-PLAN

WIDTH	WW	600	600	450	450	300
	W	450	300	300	150	150
DEPTH	D	100	100	100	100	100

LADDER TYPE ACCESSORIES

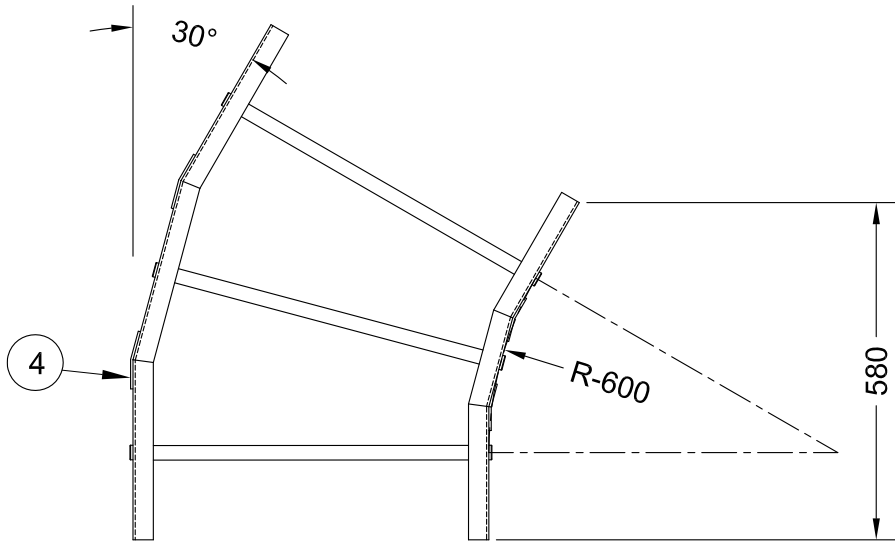
FOR GENERAL NOTES REFER SHEET 18 OF 18



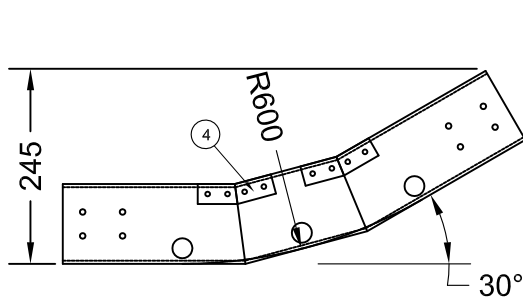
TYPICAL DETAILS OF CABLE TRAYS AND ACCESSORIES

DWG. NO.
PE-DG-425-507-E005

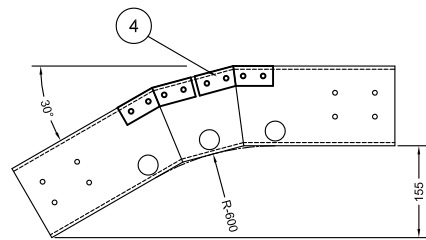
SHT. 08 OF 18 REV. 00



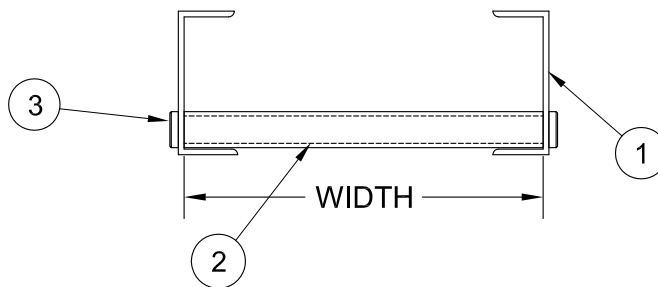
30° HORIZONTAL BEND LADDER TYPE



30° VERTICAL INSIDE BEND LADDER TYPE



30° VERTICAL OUTSIDE BEND LADDER TYPE



3	600MM
2	450MM
1	300MM
SR.NO.	WIDTH

NOTES:

- ALL DIMENSIONS ARE IN MM.

4	FISH PLATE WITH SS304 HARDWARE	FRP
3	SQ. TUBE RUNG FIXING PLUG	FRP
2	25 X 25 SQ. TUBE	FRP
1	C-CHANNEL : 100X35X4MM	FRP
SR. NO.	DESCRIPTION	MATERIAL

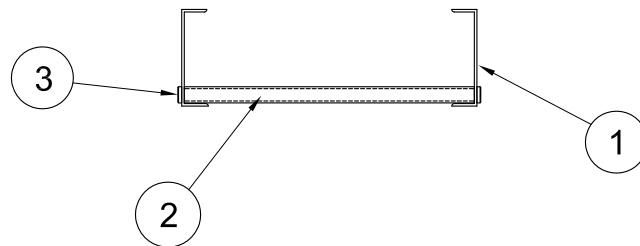
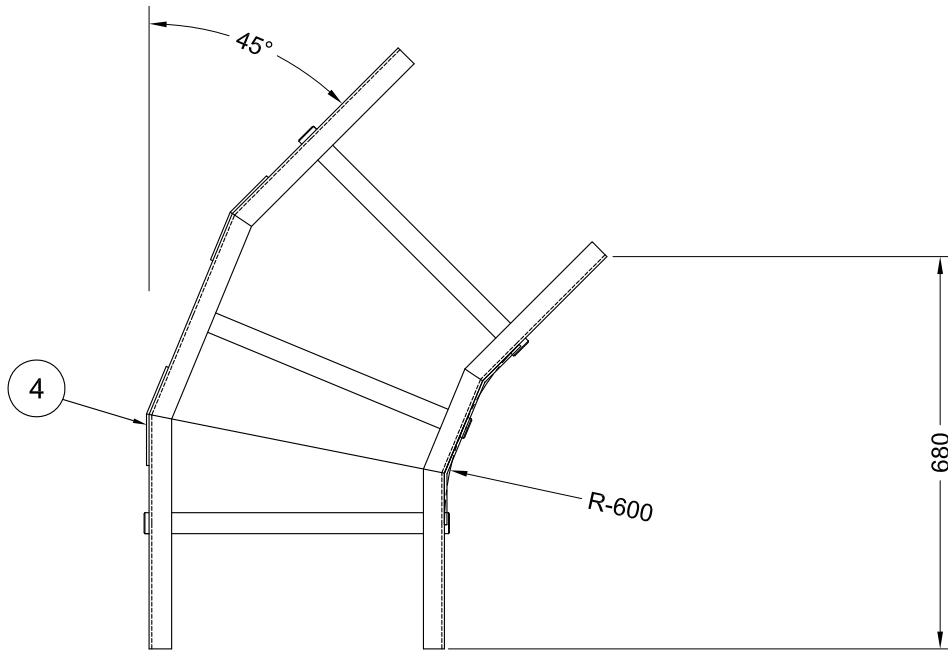
FOR GENERAL NOTES REFER SHEET 18 OF 18



TYPICAL DETAILS OF FRP TYPE CABLE TRAYS AND ACCESSORIES

DWG. NO.
PE-DG-425-507-E005

SHT. 9 OF 18 REV. 00



3	600MM
2	450MM
1	300MM
SR.NO.	WIDTH

4	FISH PLATE WITH SS304 HARDWARE.	FRP
3	SQ. TUBE RUNG FIXING PLUG	FRP
2	25X25 SQ. TUBE.	FRP
1	C-CHANNEL : 100X35X4MM	FRP
SR. NO.	DESCRIPTION	MATERIAL

NOTES:

- ALL DIMENSIONS ARE IN MM.

45° HORIZONTAL LADDER TYPE BEND

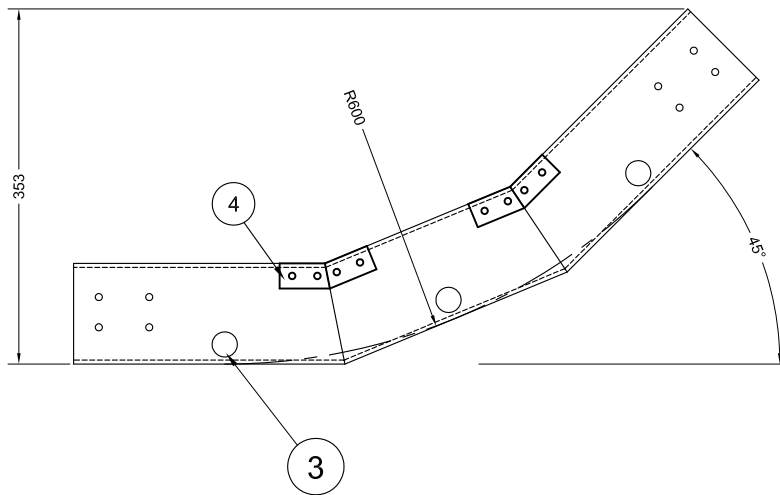
FOR GENERAL NOTES REFER SHEET 18 OF 18



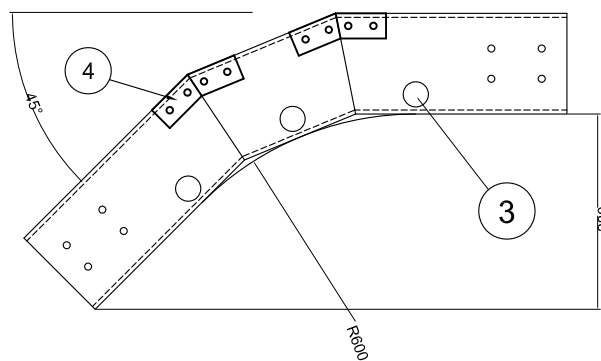
TYPICAL DETAILS OF FRP TYPE CABLE TRAYS AND ACCESSORIES

DWG. NO.
PE-DG-425-507-E005

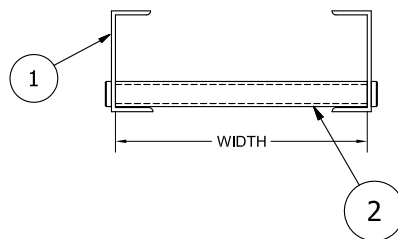
SHT. 10 OF 18 REV. 00



45° VERTICAL INSIDE BEND LADDER TYPE



45° VERTICAL OUTSIDE BEND LADDER TYPE



3	600MM
2	450MM
1	300MM
SR.NO.	WIDTH

4	FISH PLATE WITH SS304 HARDWARE.	FRP
3	SQ. TUBE RUNG FIXING PLUG	FRP
2	25X25 SQ. TUBE.	FRP
1	C-CHANNEL : 100X35X4MM	FRP
SR. NO.	DESCRIPTION	MATERIAL

NOTES:

- ALL DIMENSIONS ARE IN MM.

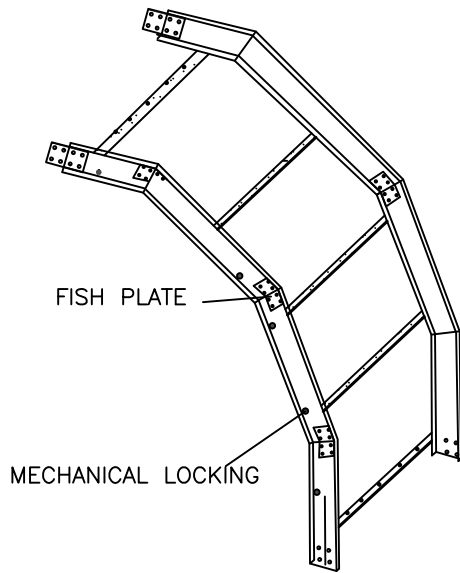
FOR GENERAL NOTES REFER SHEET 18 OF 18



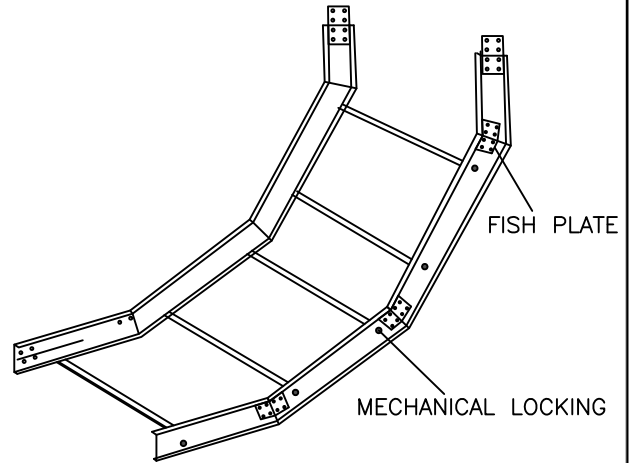
TYPICAL DETAILS OF FRP TYPE CABLE TRAYS AND ACCESSORIES

DWG. NO.
PE-DG-425-507-E005

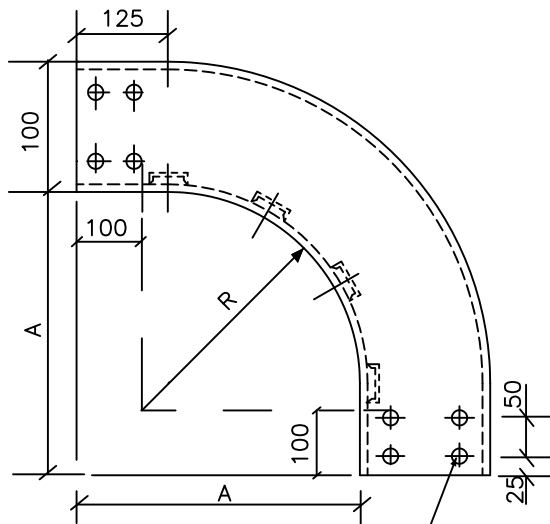
SHT. 11 OF 18 REV. 00



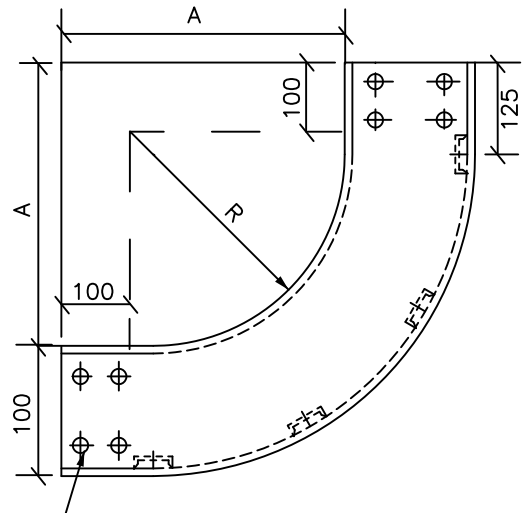
**90° VERTICAL BEND
(OUTSIDE)**



**90° VERTICAL BEND
(INSIDE)**



**ELEVATION
90° VERTICAL BEND
(OUTSIDE)**



**ELEVATION
90° VERTICAL BEND
(INSIDE)**

4 NOS. 7 DIA. HOLES
FOR JOINTING

WIDTH(W)	RADIUS (R)	A
600	600	700
450	600	700
300	600	700

LADDER TYPE ACCESSORIES

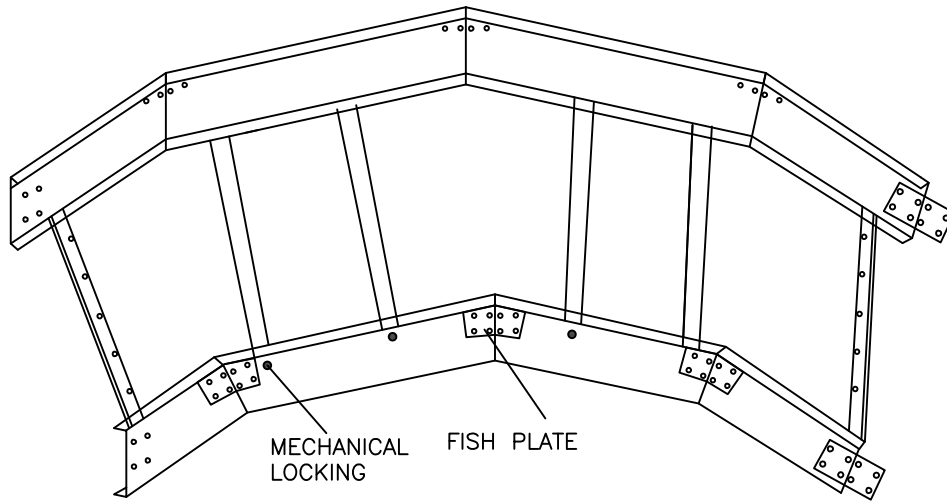
FOR GENERAL NOTES REFER SHEET 18 OF 18



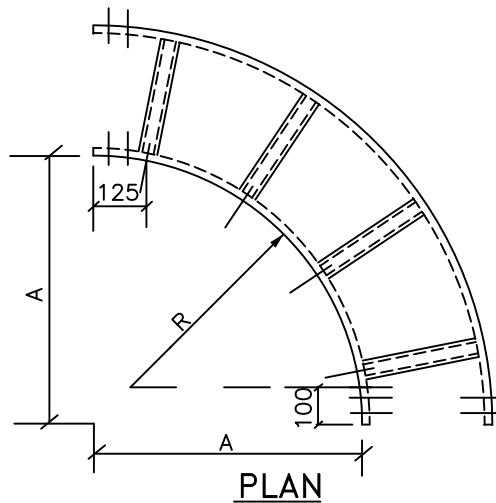
TYPICAL DETAILS OF FRP TYPE CABLE
TRAYS AND ACCESSORIES

DWG. NO.
PE-DG-425-507-E005

SHT. 12 OF 18 REV. 00



90° HORIZONTAL BEND



PLAN
90° HORIZONTAL BEND

WIDTH(W)	RADIUS (R)	A
600	600	700
450	600	700
300	600	700

LADDER TYPE ACCESSORIES

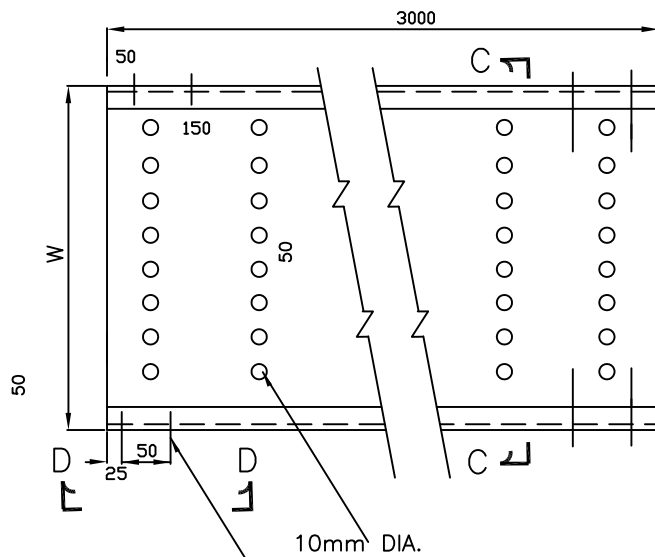
FOR GENERAL NOTES REFER SHEET 18 OF 18



TYPICAL DETAILS OF FRP TYPE CABLE TRAYS AND ACCESSORIES

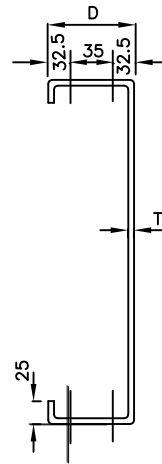
DWG. NO.
PE-DG-425-507-E005

SHT. 13 OF 18 REV. 00

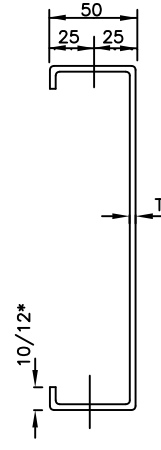


10mm DIA.

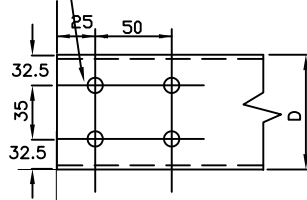
4 HOLES 7mm DIA.



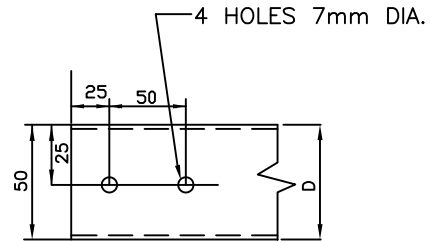
SECTION-CC
(600/450/300/
150 TRAYS)



SECTION-CC
(100/50 TRAYS)



VIEW-DD
(600/450/300/
150W TRAYS)



VIEW-DD
(100W/50W
TRAYS)

TRAY WIDTH W (mm)	600	450	300	150	100	50
TRAY DEPTH D (mm)	100	100	100	100	50	50
T (mm)	4	4	4	4	4	4

*10 MM FOR 50MM WIDE TRAY AND 12 MM FOR 100MM WIDE TRAY

PERFORATED TYPE TRAY

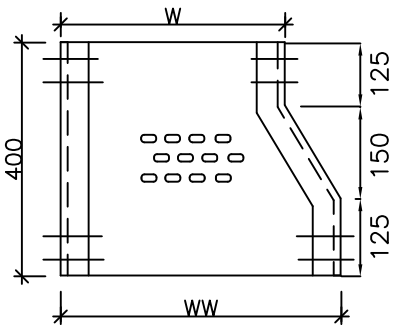
FOR GENERAL NOTES REFER SHEET 18 OF 18



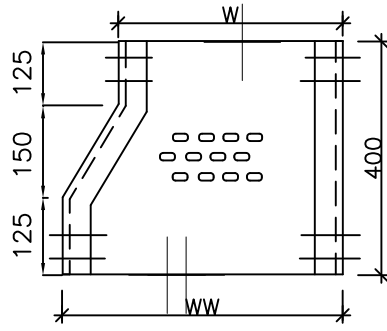
TYPICAL DETAILS OF FRP TYPE CABLE
TRAYS AND ACCESSORIES

DWG. NO.
PE-DG-425-507-E005

SHT. 14 OF 15 REV. 00



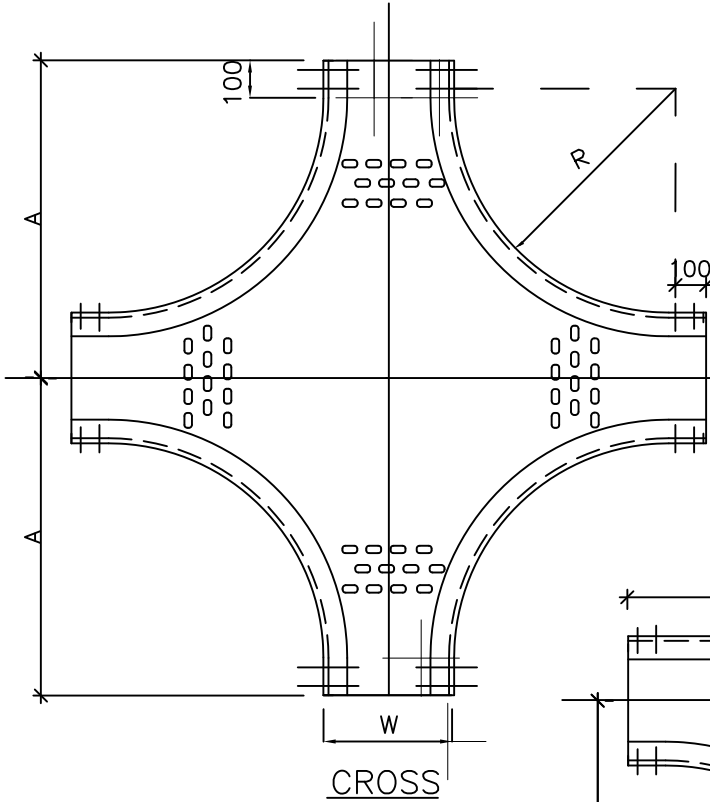
LEFT HAND REDUCER



RIGHT HAND REDUCER

PERFORATED TYPE

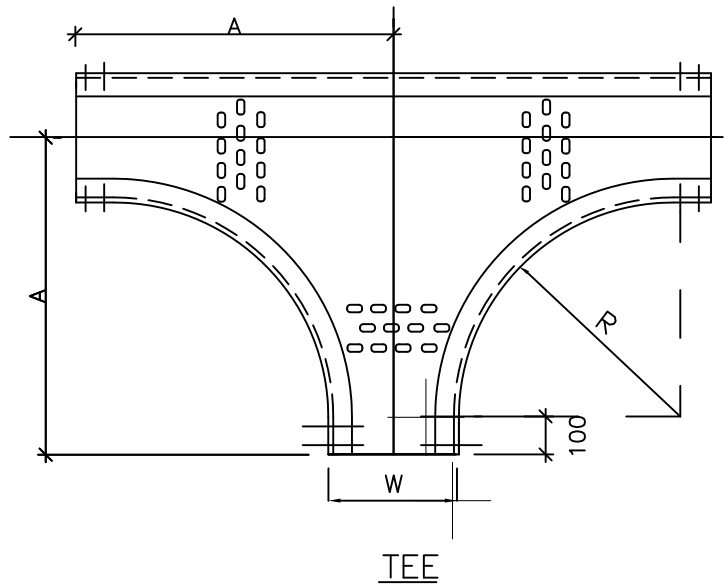
WW	W	DEPTH	THICKNESS
600	450	100	4
600	300	100	4
450	300	100	4
450	150	100	4
300	150	100	4



CROSS

PERFORATED TYPE

WIDTH(W)	RADIUS (R)	A	THICKNESS
600	600	1000	4
450	600	925	4
300	600	850	4



TEE

PERFORATED TYPE ACCESSORIES

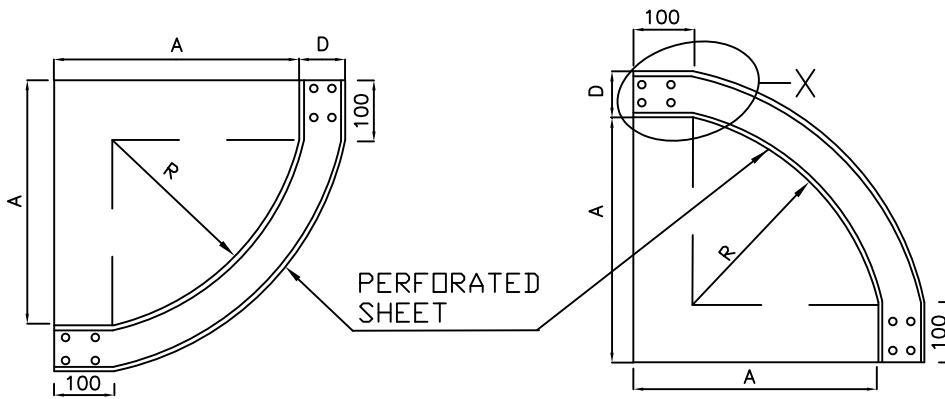
FOR GENERAL NOTES REFER SHEET 18 OF 18



TYPICAL DETAILS OF FRP TYPE CABLE TRAYS AND ACCESSORIES

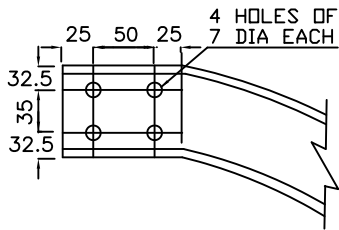
DWG. NO.
PE-DG-425-507-E005

SHT. 15 OF 18 REV. 00



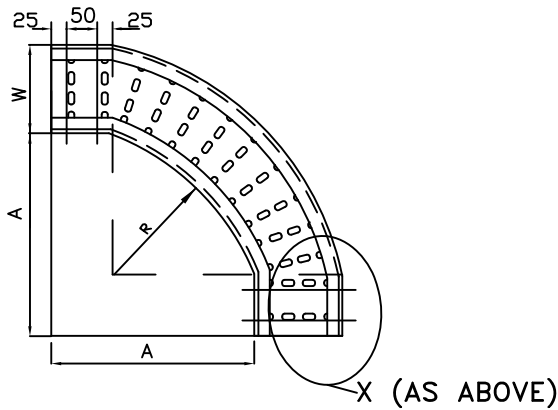
INSIDE TYPE

OUTSIDE TYPE



ENLARGED VIEW OF "X"

90° VERTICAL BEND - PERFORATED TYPE



90° HORIZONTAL BEND - PERFORATED TYPE

WIDTH(W)	RADIUS (R)	A	T
600	600	700	4
450	600	700	4
300	600	700	4

PERFORATED TYPE ACCESSORIES

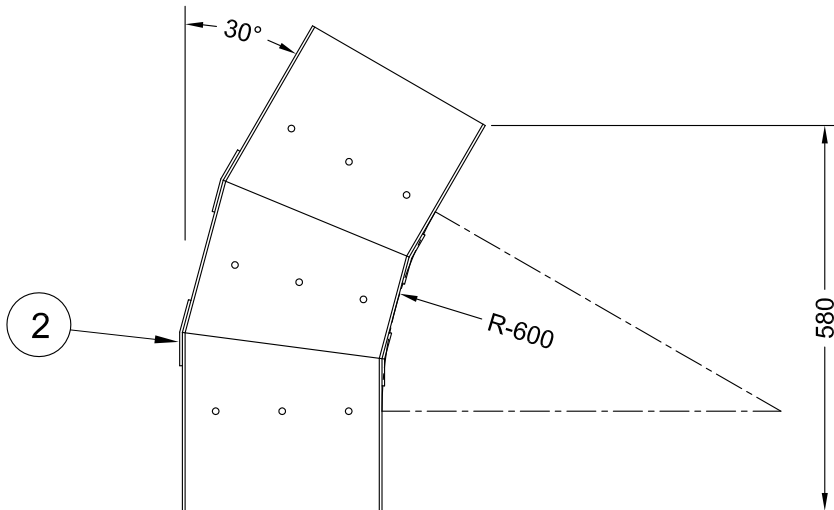
FOR GENERAL NOTES REFER SHEET 18 OF 18



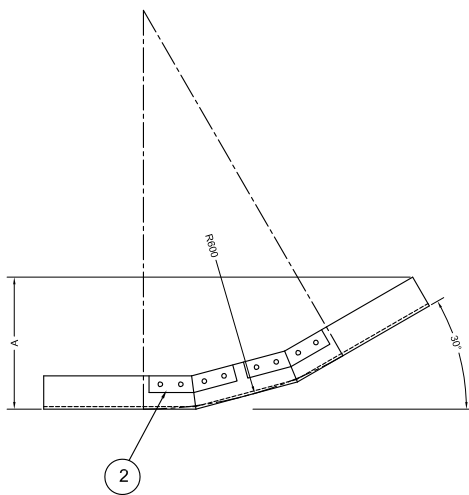
TYPICAL DETAILS OF FRP TYPE CABLE TRAYS AND ACCESSORIES

DWG. NO.
PE-DG-425-507-E005

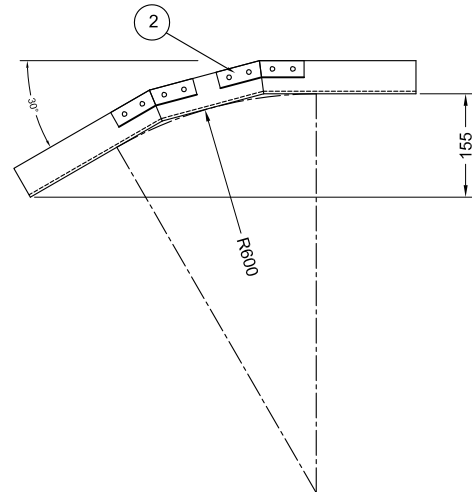
SHT. 16 OF 18 REV. 00



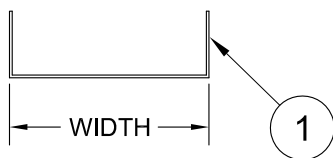
30° HORIZONTAL
PERFORATED TYPE BEND.



30° VERTICAL PERFORATED TYPE
INSIDE BEND.



30° VERTICAL PERFORATED TYPE
OUTSIDE BEND.



6	600X100X4MM	600
5	450X100X4MM	450
4	300X100X4MM	300
3	150X100X4MM	150
2	100X50X4MM	100
1	50X50X4MM	50
ITEM	CHANNEL	WIDTH

2	FISH PLATE WITH SS304 HARDWARE	AS REQ.	FRP
1	C-CHANNEL : AS PER TABLE	AS REQ.	FRP
SR. NO.	DESCRIPTION	QTY.	MATERIAL

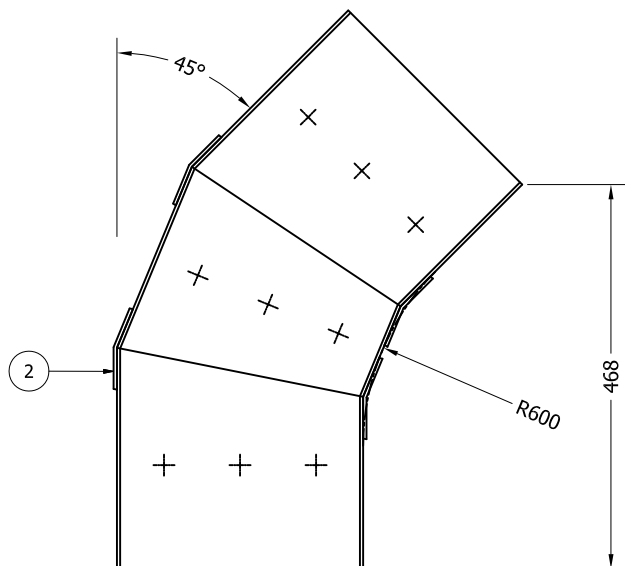
FOR GENERAL NOTES REFER SHEET 18 OF 18



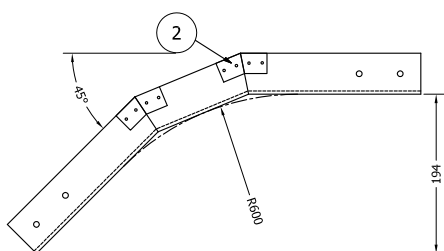
TYPICAL DETAILS OF FRP TYPE CABLE
TRAYS AND ACCESSORIES

DWG. NO.
PE-DG-425-507-E005

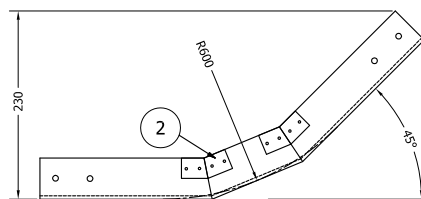
SHT. 16a OF 18 REV. 00



45° HORIZONTAL
PERFORATED TYPE BEND.



45° VERTICAL
PERFORATED TYPE OUTSIDE BEND.



45° HORIZONTAL
PERFORATED TYPE INSIDE BEND.



NOTES :

- ALL DIMENSIONS ARE IN MM.

6	600X100X4MM	600
5	450X100X4MM	450
4	300X100X4MM	300
3	150X100X4MM	150
2	100X50X4MM	100
1	50X50X4MM	50
ITEM	CHANNEL	WIDTH

2	FISH PLATE WITH SS304 HARDWARE.	AS REQ.	FRP
1	PERFORATED TRAY AS PER TABLE.	AS REQ.	FRP
ITEM	DESCRIPTION	QTY	MATERIAL

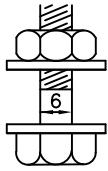
FOR GENERAL NOTES REFER SHEET 18 OF 18



TYPICAL DETAILS OF FRP TYPE CABLE
TRAYS AND ACCESSORIES

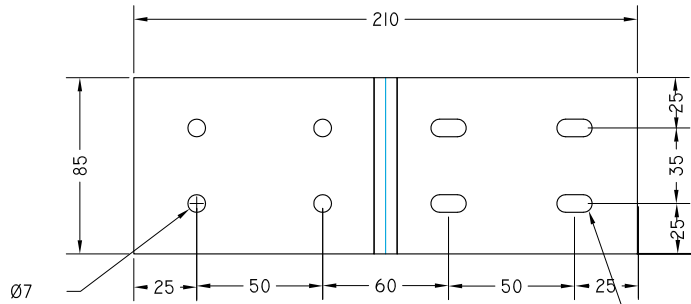
DWG. NO.
PE-DG-425-507-E005

SHT. 16b OF 18 REV. 00

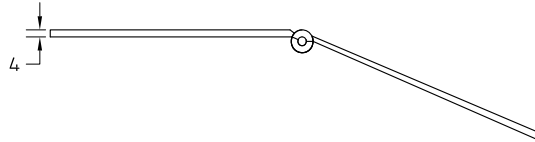


QTY. REQD/TRAY SECTION

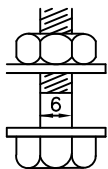
- A) 8 NOS. M6 BOLTS
- B) 8 NOS. NUTS
- C) 16 NOS. WASHERS



SAME AS SHEET NO. 3 OF 18

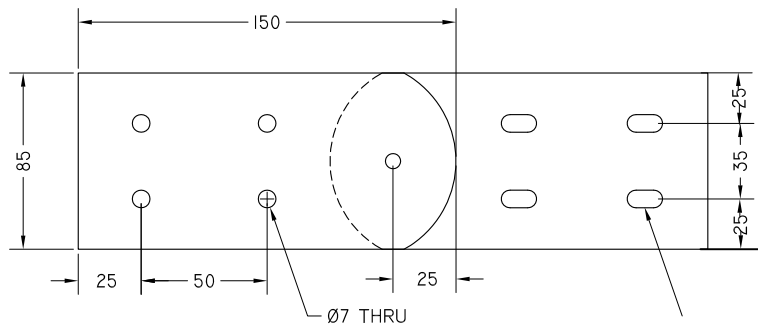


**FRP ADJUSTABLE HORIZONTAL
SPLICE PLATE**

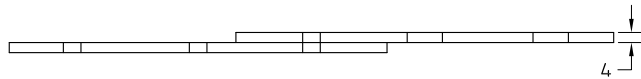


QTY. REQD/TRAY SECTION

- A) 8 NOS. M6 BOLTS
- B) 8 NOS. NUTS
- C) 16 NOS. WASHERS



SAME AS SHEET NO. 3 OF 18



**FRP ADJUSTABLE VERTICAL
SPLICE PLATE**

NOTES:

- ALL DIMENSIONS ARE IN MM.

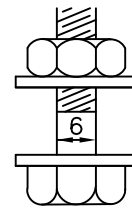
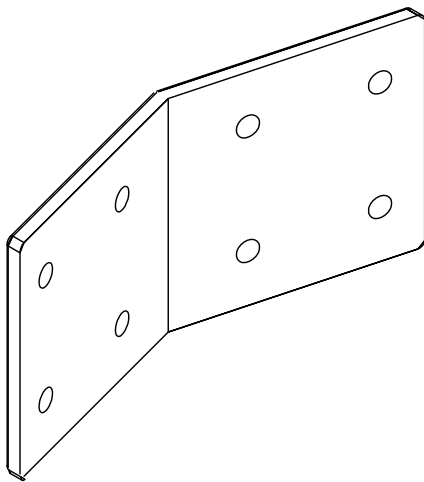
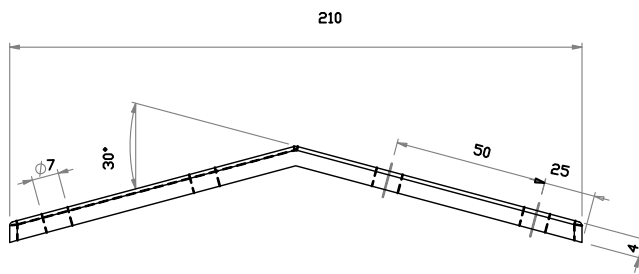
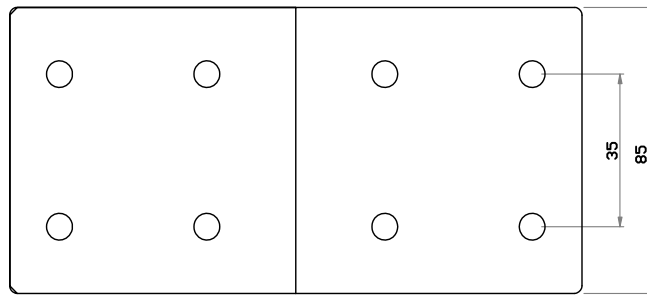
FOR GENERAL NOTES REFER SHEET 18 OF 18



TYPICAL DETAILS OF FRP TYPE CABLE
TRAYS AND ACCESSORIES

DWG. NO.
PE-DG-425-507-E005

SHT. 17 OF 18 REV. 00



QTY. REQD/TRAY SECTION

- A) 8 NOS. M6 BOLTS
- B) 8 NOS. NUTS
- C) 16 NOS. WASHERS

30 degree Horizontal Fixed splice plate

NOTE: These splice plates shall be used for fabrication of bends at site.

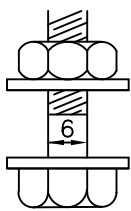
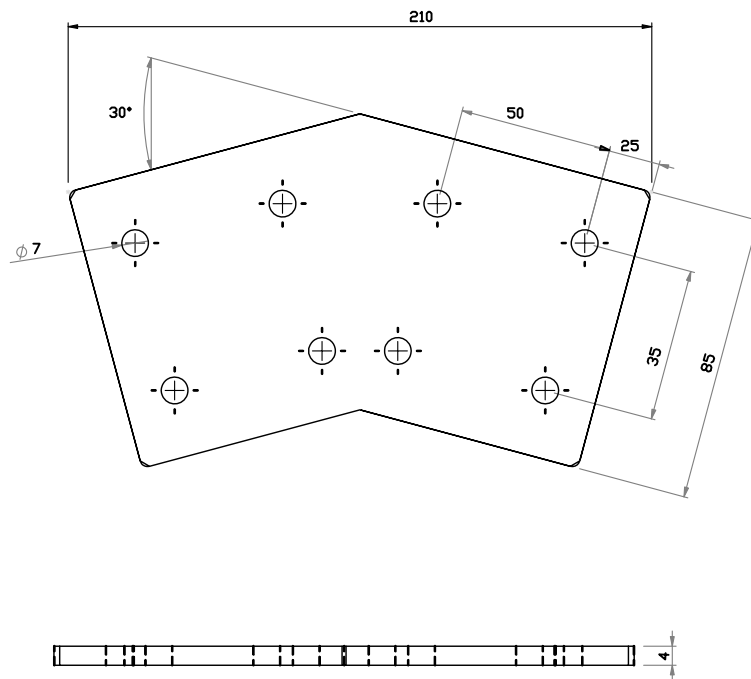
FOR GENERAL NOTES REFER SHEET 18 OF 18



TYPICAL DETAILS OF FRP TYPE CABLE TRAYS AND ACCESSORIES

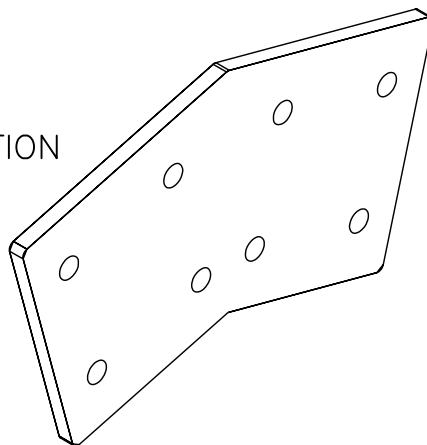
DWG. NO.
PE-DG-425-507-E005

SHT. 17a OF 18 REV. 00



QTY. REQD/TRAY SECTION

- A) 8 NOS. M6 BOLTS
- B) 8 NOS. NUTS
- C) 16 NOS. WASHERS



30 degree Vertical Fixed Splice plate

NOTE: These splice plates shall be used for fabrication of bends at site.

FOR GENERAL NOTES REFER SHEET 18 OF 18

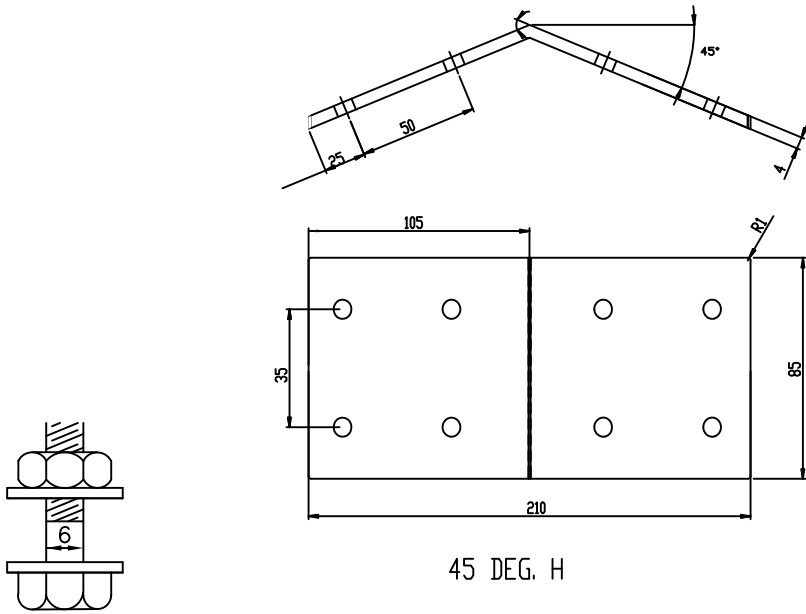


TYPICAL DETAILS OF FRP TYPE CABLE TRAYS AND ACCESSORIES

DWG. NO.

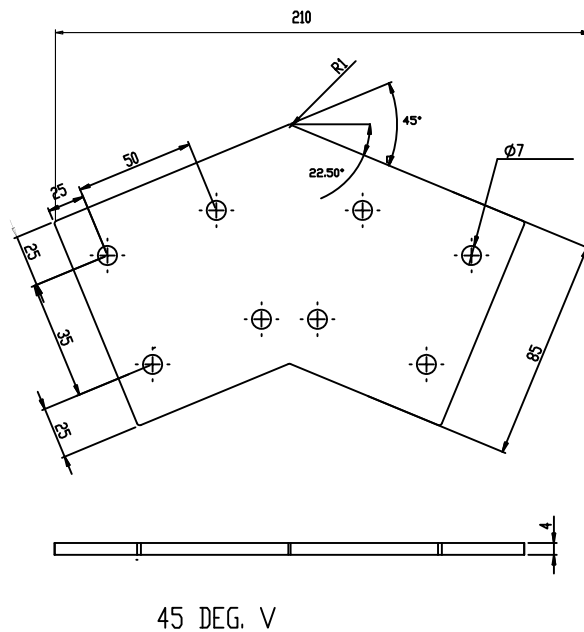
PE-DG-425-507-E005

SHT. 17b OF 18 REV. 04



QTY. REQD/TRAY SECTION

- A) 8 NOS. M6 BOLTS
- B) 8 NOS. NUTS
- C) 16 NOS. WASHERS



FIXED SPLICE PLATES

NOTE: These splice plates shall be used for fabrication of bends at site.

FOR GENERAL NOTES REFER SHEET 18 OF 18



TYPICAL DETAILS OF FRP TYPE CABLE TRAYS AND ACCESSORIES

DWG. NO.

PE-DG-425-507-E005

SHT. 17c OF 18 REV. 00

NOTES:-

1. THE FRP TYPE LADDER AND PERFORATED TYPE CABLE TRAYS AND ACCESSORIES (INCLUDING SIDE RUNNERS OF LADDER TYPE TRAYS & ACCESSORIES) SHALL BE MADE OF 4MM THICKNESS. COUPLER PLATE SHALL BE 4 MM THICK.
2. FOR LADDER TYPE CABLE TRAYS AND ACCESSORIES, ALL RUNGS SHALL BE SQUARE TUBE.
3. STANDARD TRAY ACCESSORIES SHALL BE WITH THE RADIUS INDICATED IN THIS DRAWING.
4. ALL TRAY CORNERS SHALL BE SMOOTH AND FREE OF SHARP EDGES.
5. THE CABLE TRAY COVER SHALL BE OF 3MM THICKNESS AND SHALL BE OF FRP.
6. THE WIDTH, LENGTH & HEIGHT OF TRAYS & TRAY COVERS SHALL BE WITHIN A TOLERANCE OF (+) 2 mm. THE THICKNESS TOLERANCE SHALL BE (+) 0.5 mm. NO NEGATIVE TOLERANCE IN THICKNESS, WIDTH, HEIGHT OR LENGTH IS PERMITTED.
7. TO FACILITATE ASSEMBLY, ALL ACCESSORIES AT ENDS SHALL HAVE 100mm STRAIGHT PORTION.
8. ALL NUTS, BOLTS, WASHERS ETC., SHALL BE OF STAINLESS STEEL (SS 304).
9. COUPLER PLATES AND SPLICE PLATES SHALL BE OF FRP.
10. FINISHED TRAYS & COVERS SHALL BE FREE FROM BURRS AND SHARP EDGES.
11. ALL DIMENSIONS ARE IN mm UNLESS NOTED OTHERWISE.
12. WIDTH OF CABLE TRAYS PROPOSED TO BE USED FOR THE PROJECT ARE AS UNDER:
A) LADDER TYPE: 600W, 450W, 300W, 150W.
B) PERFORATED TYPE: 600W, 450W, 300W, 150W, 100W, 50W
13. THE DEPTH OF 600W, 450W, 300W, 150W TRAYS & ACCESSORIES SHALL BE 100MM WHILE DEPTH OF 100W & 50W CABLE TRAY SHALL BE 50MM.
14. FOLLOWING SHALL BE LOADING ON CABLE TRAYS AT 1500MM SUPPORT SPAN:-
FOR LADDER TYPE CABLE TRAYS:-
600W CABLE TRAY - 90KG/M
450W CABLE TRAY - 75KG/M
300W CABLE TRAY - 60KG/M
150W CABLE TRAY - 30KG/M

FOR PERFORATED TYPE CABLE TRAYS:-
600W CABLE TRAY - 90KG/M
450W CABLE TRAY - 75KG/M
300W CABLE TRAY - 60KG/M
150W CABLE TRAY - 30KG/M
100W CABLE TRAY - 15KG/M
50W CABLE TRAY - 7.5KG/M

IN ADDITION TO THIS 80KG POINT LOAD AT MID SPAN SHALL ALSO BE CONSIDERED.



TYPICAL DETAILS OF FRP TYPE CABLE TRAYS AND ACCESSORIES

DWG. NO.
PE-DG-425-507-E005

SHT. 18 OF 18 REV. 00